

ACCESS COVERS

Why choose a McBerns Access Cover?

- Exclusive McBerns frame extrusion
- Custom made to suit site requirements
- 4 Side void protection safety grate system
- Design, Fabricate and Installation Service
- A, B & D load rate tested
- Lightweight lift
- Flush mounted or mounted on a hob
- Hinged safety grates (removable)



McBerns Access Covers

McBerns has been designing and manufacturing Pump Station Safety Access Covers for over 15 years and they just keep improving. Our access cover designs have set new standards in void protection and workers' safety. Now specified throughout major Water & Wastewater Authorities. Also used throughout construction, mining and telecommunications companies.

Our innovative 4-side void protection safety grate designs allow for safe, easy access with an external barrier. Suited for use in new pump station designs or retro-fitted to existing sites. The Safety Access Covers are suited to any situation where fall protection is needed. They are used on pump stations, valve pits, sewerage treatment plants, and water reservoirs.

CONSULTATION • DESIGN • MANUFACTURE

McBerns offers a highly qualified design team skilled with industry knowledge and engineering expertise. With each McBerns Access Cover individually designed and manufactured to suit specific site requirements, McBerns prides itself on working closely with its customers and being involved from the concept design stage to ensure product suitability and total safety.

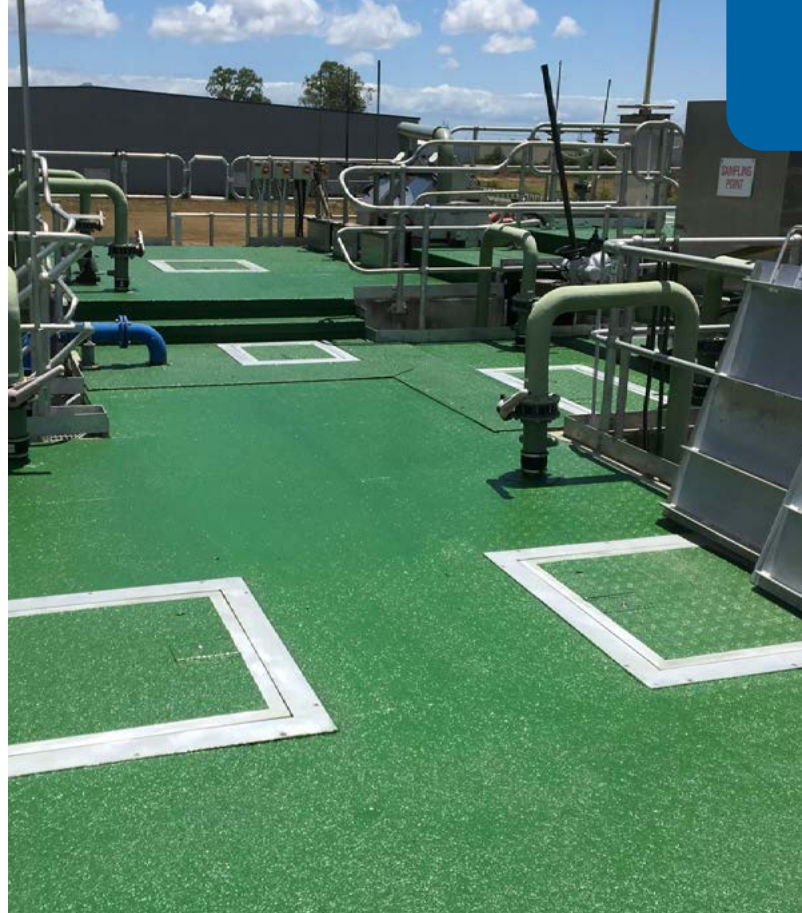
Our design consulting service involves:

- Consultation with all stake holders at design stage
- Design specifications and drawings for approval
- On site inspections throughout project life
- Manufactured to meet Australian Standards
- Follow-up maintenance service

INNOVATION

McBerns' innovative designs include an exclusive frame extrusion which ensures McBerns Access Covers are structurally stronger by reducing the number of welds.

This results in better sealing and also increases the strength of the cover. The extrusion enables McBerns to manufacture load ratings A, B and D covers for different sites, as well as streamlining production and quality outputs - helping to reduce production costs.



ACCESS COVER TESTING AND ACCREDITATION

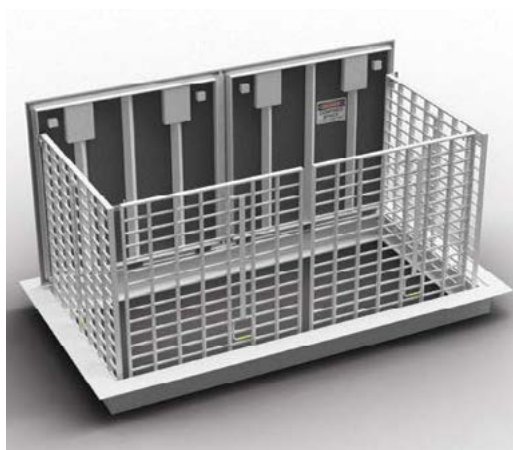
All McBerns access cover designs are assessed for manufacturer compliances and any new designs are assessed and tested to meet the following Australian Standards.

- AS 2865-2009** – Confined spaces, general design considerations
- Alpha Test** – (NATA accredited) test procedure TP208
- AS 1319-1994** – Safety signs, confined space entry signs
- AS 3996:2019** – Access covers and grates. **Class A Certification, Class B Certification, Class D Certification.**
- AS/NZS 1665:2004** – Welding of aluminium structures
- AS 1657:2018** – Fixed platforms, walkways, stairways and ladders
- AS/NZS 1866:1997** – Aluminium and aluminium alloys
- AS 4586:2013** – Slip resistance classification, lid slip resistant coating
- AS/NZS 1665:2004** – Cat B – Welding of aluminium structures
- AS 1391:1994** – Metallic materials



LFPM

Part Number:	LFPM-1
Description:	Aluminium Safety Access Cover - Premium, Gas, Air and Water tight
Application:	Sewage Pump Stations, Manholes, Air Valves
Material / Finish:	Gas & Air tight Aluminium Frame, Non slip coating, Optional colours min 600 x 600, 1200 x 1400, Custom
Dimensions:	Each lid lift weight designed < 20kg
Weight:	AS 3996:2019, AS 4586:2013, AS/NZS 1665:2007,
General Specifications:	AS 1657:2018



LFVP

Part Number:	LFVP-2
Description:	Aluminium Safety Access Cover - 4 Side Void 2 Section
Application:	Sewage Pump Stations, Manholes, Air Valves
Material / Finish:	Aluminium Frame, Non slip coating, Optional colours
Dimensions:	1200 x 1200, 1500 x 120, 2900 x 1200, Custom
Weight:	Each lid lift weight designed < 20kg
General Specifications:	AS 3996:2019, AS 4586:2013, AS/NZS 1665:2007, AS 1657:2018



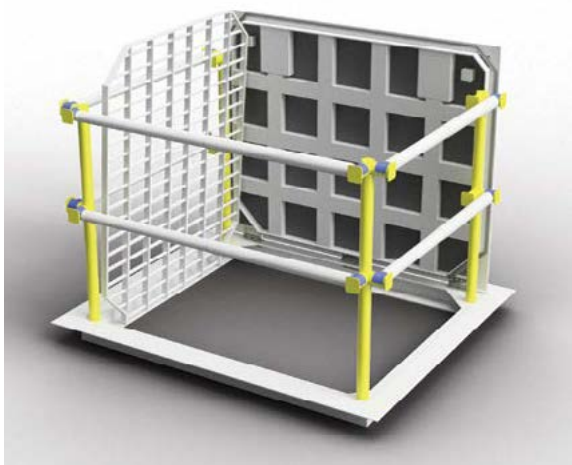
LFM

Part Number:	LFM-2
Description:	Aluminium Safety Access Cover - Flush Mount 2 Section
Application:	Retro Fitting, Sewage Pump Stations, Manholes, Air Valves
Material / Finish:	Aluminium Frame, Non slip coating, Optional colours
Dimensions:	1400 x 1200, 2000 x 1300, 2500 x 1400, Custom
Weight:	Each lid lift weight designed < 20kg
General Specifications:	AS 3996:2019, AS 4586:2013, AS/NZS 1665:1997, AS 1657:2018



LPL

Part Number:	LPL-1
Description:	Aluminium Safety Access Cover - Low Profile Lid
Application:	Ideally used with Gatic lids, economic Alternative, Load Rating "A" only
Material / Finish:	Aluminium Frame, Non slip coating, Optional colours
Dimensions:	900 x 600, 900 x 900, Custom
Weight:	Each lid lift weight designed < 20kg
General Specifications:	AS 3996:2019, AS 4586:2013, AS/NZS 1665:2007, AS 1657:2018



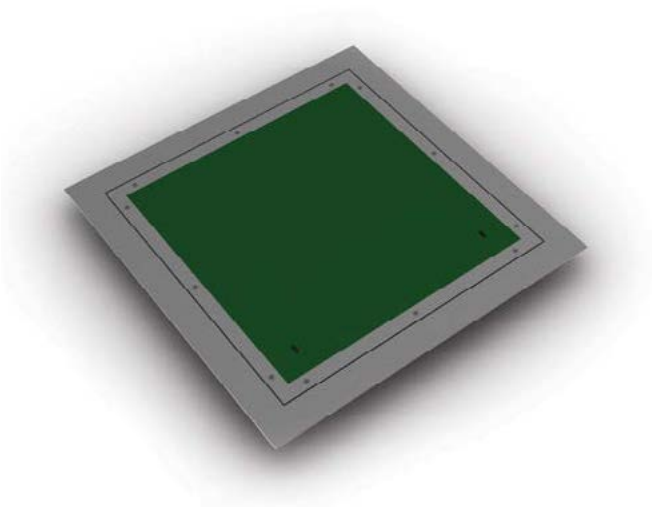
LFPR

Part Number:	LFPR
Description:	Aluminium Safety Access Cover - Post & Rail 2 Section
Application:	Sewage Pump Stations, Manholes, Air Valves
Material / Finish:	Aluminium Frame, Non slip coating, Optional colours
Dimensions:	900 x 600, 900 x 900, 1200 x 900, Custom
Weight:	Each lid lift weight designed < 20kg
General Specifications:	AS 3996:2019, AS 4586:2013, AS/NZS 1665:2007, AS 1657:2018



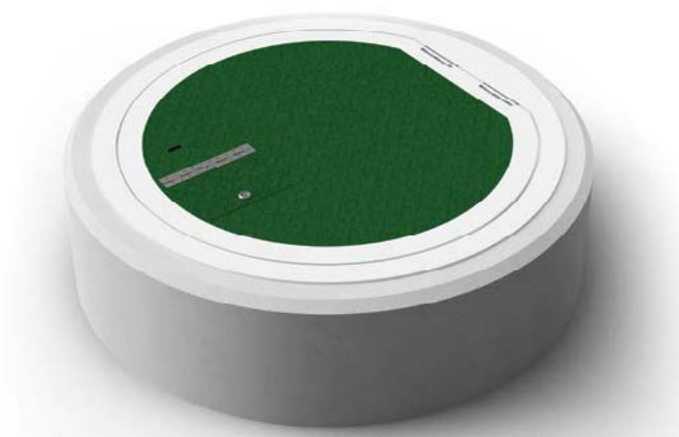
LFVP GATE

Part Number:	LFVPGATE
Description:	Aluminium Safety Access Cover - LFVP Inclusive Gate
Application:	Sewage Pump Stations, Manholes, Air Valves
Material / Finish:	Aluminium Frame, Non slip coating, Optional colours, Gated entry
Dimensions:	900 x 600, 900 x 900, 1200 x 900, Custom
Weight:	Each lid lift weight designed < 20kg
General Specifications:	AS 3996:2019, AS 4586:2013, AS/NZS 1665:2007, AS 1657:2018



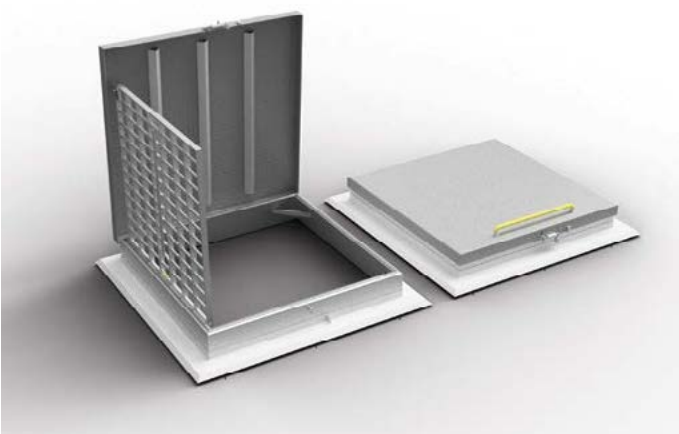
Bolt Down Lid

Part Number:	LBOLTDN
Description:	Aluminium Safety Access Cover - Bolt Down Gas/Water
Application:	Designed to Bolt Down to ensure Water and Gas tight
Material / Finish:	Aluminium Frame, Non slip coating, Optional colours
Dimensions:	1200 x 1200, Custom
Weight:	Each lid lift weight designed <20kg
General Specifications:	AS 3996:2019, AS 4586:2013, AS/NZS 1665:2007



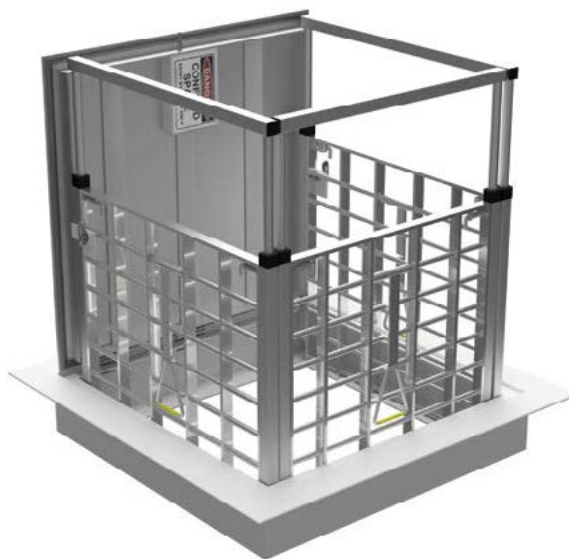
LFM Custom Round

Part Number:	LFMC
Description:	Aluminium Safety Access Cover - Round to custom design
Application:	Designed to suit circular opening can be bolt or hinge
Material / Finish:	Aluminium Frame, Non slip coating, Optional colours
Dimensions:	Min 900mm Diameter ID
Weight:	Each lid lift weight designed <20kg
General Specifications:	AS 3996:2019, AS 4586:2013, AS/NZS 1665:2007



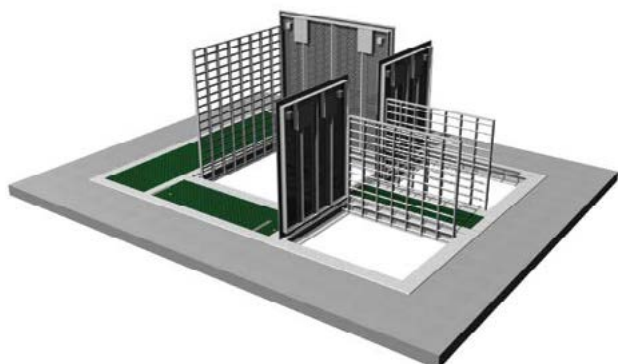
Certified Reservoir Lid

Part Number:	LRES
Description:	Aluminium Safety Access Cover - Flush Mount 1 Section
Application:	Retro Fitting, Sewage Pump Stations, Manholes, Air Valves
Material / Finish:	Aluminium Frame, Non slip coating, Optional colours
Dimensions:	1200 x 1200, Custom
Weight:	Each lid lift weight designed < 20kg
General Specifications:	AS 3996:2019, AS 4586:2013, AS/NZS 1665:2007, AS 1657:2018



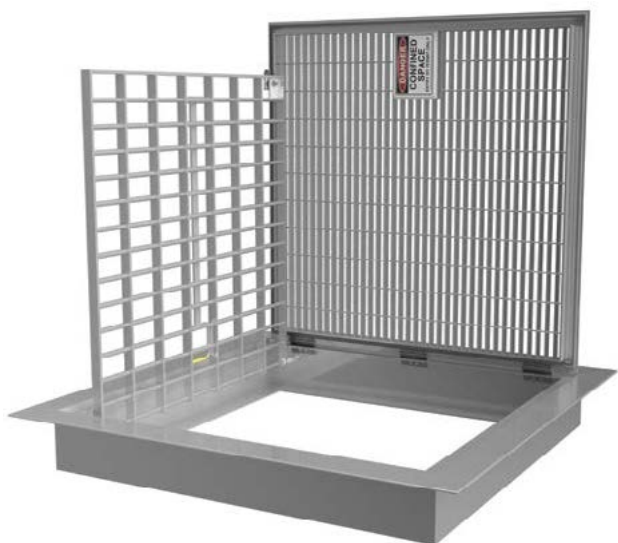
Telescopic Grate

Part Number:	LFVPT
Description:	Aluminium Safety Access Cover - Four Sided Void Telescopic Rail
Application:	Ideally used with smaller opening LFVP to achieve required height
Material / Finish:	Aluminium Frame, Non slip coating, Optional colours
Dimensions:	For covers with minimal opening
Weight:	Each lid lift weight designed < 20kg
General Specifications:	AS 3996:2019, AS 4586:2013, AS/NZS 1665:2007, AS 1657:2018



Custom

Part Number:	LFM-CUSTOM
Description:	Aluminium Safety Access Cover - Flush Mount Custom
Application:	Retro Fitting, Sewage Pump Stations, Manholes, Air Valves
Material / Finish:	Aluminium Frame, Non slip coating, Optional colours
Dimensions:	Taking the infrastructure into account we can design to specific requirements
Weight:	Each lid lift weight designed < 20kg
General Specifications:	AS 3996:2019, AS 4586:2013, AS/NZS 1665:2007, AS 1657:2018



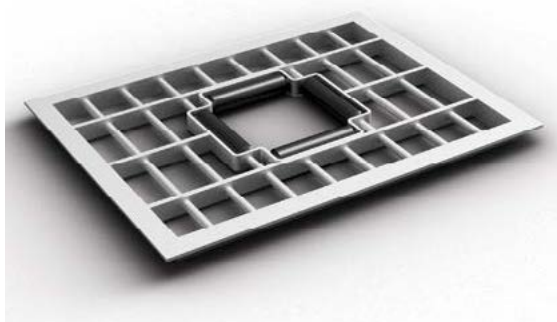
Grated Access Cover

Part Number:	LFGC
Description:	Where access safety is required
Application:	Aluminium Safety Access Grated Cover
Material / Finish:	Aluminium Frame
Dimensions:	Taking the infrastructure into account we can design to specific requirements
Weight:	Variable
General Specifications:	AS 3996:2019, AS 4586:2013, AS/NZS 1657:2018, AS 1657:2018



Round Manhole Cover Walk Mesh

Part Number:	MHCOVROLROUNWM
Description:	Aluminium manhole cover with rollers - Round
Application:	Temporary Protection of open manholes
Material / Finish:	Aluminium Frame
Dimensions:	600mm to 900mm Diameter
Weight:	15kg



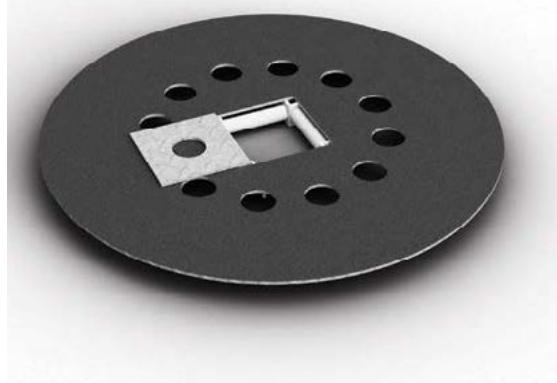
Rectangle Manhole Cover

Part Number:	MHCOVROLRECT
Description:	Aluminium manhole cover with rollers - Rectangle
Application:	Temporary Protection of open manholes
Material / Finish:	Aluminium Frame
Dimensions:	600mm to 900mm Diameter
Weight:	15kg



Round Manhole Cover

Part Number:	MHCOVROLROUN
Description:	Aluminium manhole cover with rollers - Round
Application:	Temporary Protection of open manholes
Material / Finish:	Aluminium Frame
Dimensions:	600mm to 900mm Diameter
Weight:	15kg



Round Manhole Cover - Lockable

Part Number:	MHCOVROLOCK
Description:	Aluminium manhole cover with rollers Lockable
Application:	Temporary Protection of open manholes
Material / Finish:	Aluminium Frame, Non Slip Coating, Optional colours
Dimensions:	600mm to 900mm Diameter
Weight:	15kg



MCBERNS

INNOVATIVE SOLUTIONS

ODOUR MANAGEMENT
SAFETY ACCESS COVERS
DESIGN & FABRICATION
DATA ANALYTICS

MCBERNS PTY LTD
ABN: 56 060 984 107
Address: 11 Tectonic Crescent,
Kunda Park, Qld, 4556
Phone: +61 7 5445 1646
Fax: +61 7 5445 1743
Email: mail@mcbarns.com

Noel Southern: 0411 745 458
Paul O'Kane: 0459 396 157
Stuart Darby: 0413 436 683

www.mcbarns.com