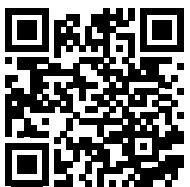


MCBERNS

INNOVATIVE SOLUTIONS

PRODUCT RANGE

ODOUR MANAGEMENT | SAFETY ACCESS COVERS | DESIGN & FABRICATION | DATA ANALYTICS



WWW.MCBERNS.COM





PRODUCT CATALOGUE

VER4.3

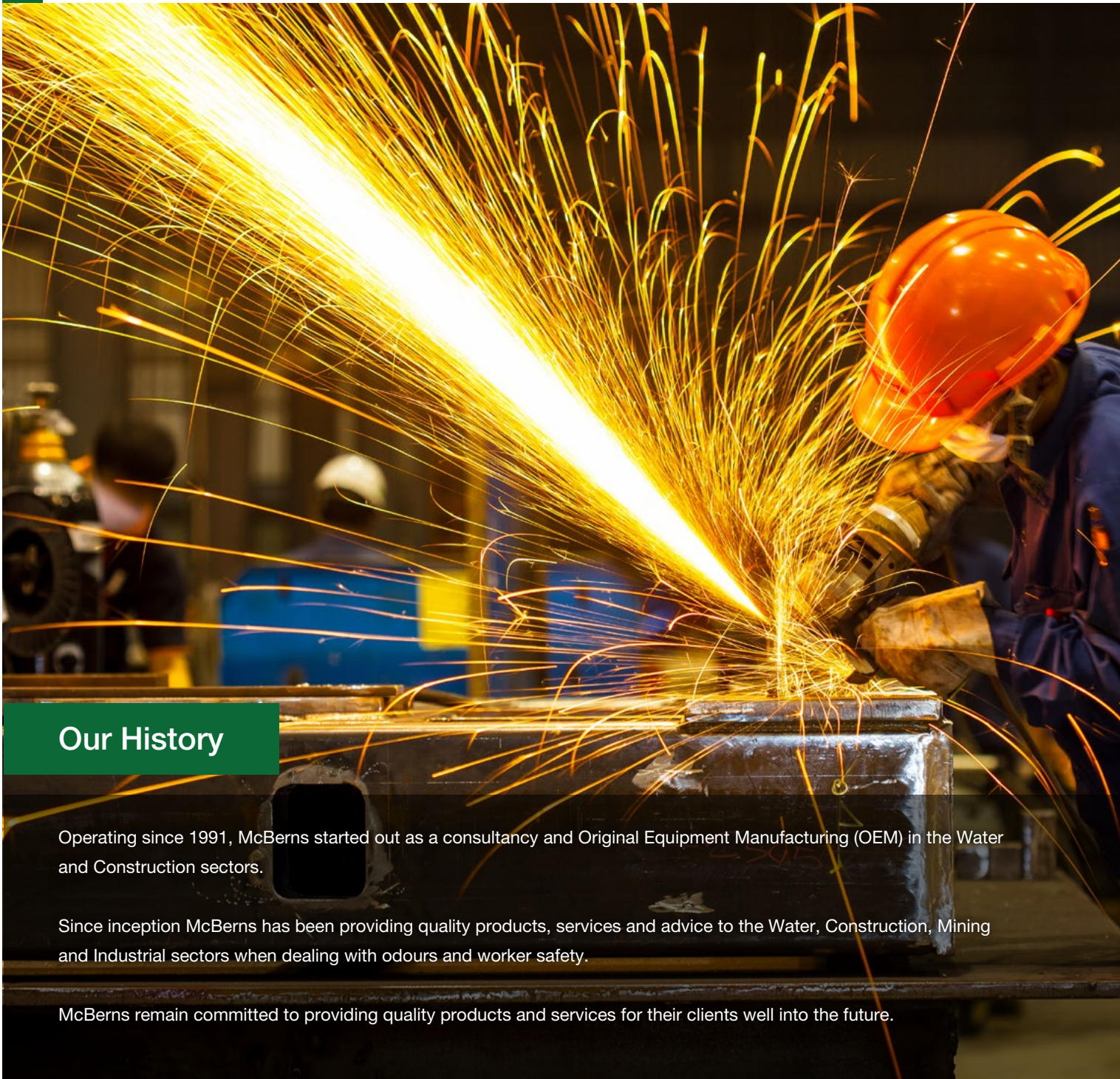
INDEX.

PAGES	PRODUCT CATEGORIES
07 - 18	Filters
19 - 20	Vent Poles
21 - 24	Access Covers
25 - 26	Well Washers
27 - 28	Fans
29 - 31	Manup Key
32 - 33	Data Analytics
34 - 37	Ancillary

ODOUR MANAGEMENT
SAFETY ACCESS COVERS
DESIGN & FABRICATION
DATA ANALYTICS

www.mcberns.com





Our History

Operating since 1991, McBerns started out as a consultancy and Original Equipment Manufacturing (OEM) in the Water and Construction sectors.

Since inception McBerns has been providing quality products, services and advice to the Water, Construction, Mining and Industrial sectors when dealing with odours and worker safety.

McBerns remain committed to providing quality products and services for their clients well into the future.

Our Experience

McBerns staff have more than some 100 years combined water industry experience and engineering expertise, ensuring that we are well equipped to custom design and manufacture our range of innovative products. We are an Australian market leader in the design and manufacture of Safety Access Covers, Odour Filter Units and some ancillary products like our Well Washer Vent Poles and new ManUp Key for releasing seized manhole covers. All McBerns branded products are designed and custom manufactured in Queensland Australia.

We provide solid technical and backup support with full product warranty.

We employ, buy local.

We support local businesses in our local community.



Products & Services

PRODUCTS:

- 4-Sided Void Protection, Flushmount and Post & Rail Safety Access Covers: custom designed for Water/Wastewater and manufactured to suit any site requirements.
- Combined Odour Filter Range Passive and Extraction Systems: eliminates 99.9% odorous emissions with ease of operation, effectiveness and cost efficiencies.
- AutoWellWasher™: reduces the accumulation of fats, oils and greases (FOGS) in pump station wells and can be programmed to use less than 100lts of water per day.
- NEW Vent Pole Packages: are designed to be fully integrated with odour extraction, power, telemetry and switchboards.
- NEW ManUp Key: uses a 1.5 tonne slide hammer action to release seized manhole covers in footpaths and roads safely. Saving time in hammering down, chiselling around the edges causing damage to the cover.
- Data Analytics (Monitoring Pressure Differential across the Filter and H₂S levels on the Output of the Filter) Monitoring and Control of the Fan in our Active Filters.
- Monitoring H₂S ppm levels on site via the Web to establish our Filter and Media Design requirements.
- Capability to integrate Control & Monitoring into a local PLC or RTU onsite.

These will assist in monitoring and eliminating odours, improving workers safety and effectiveness, while improving cost efficiencies.

SERVICES:

- Design & Consultancy (Electrical & Mechanical)
- Odour Management Services
- Fabrication & Installation (Structural Certification & RPEQ)
- Asset Management and Site Condition Assessment
- Project Management
- Mechanical/Electrical Services

QUALITY MANAGEMENT SYSTEMS CERTIFIED

- Quality Assurance (ISO9001:2015)
- Environmental Management (ISO14001:2015)
- Occupational Health and Safety (ISO45001:2018)
- Access Covers & Grates (AS 3996-2006)
- Welding of Aluminium (AS/NZS 1665:2004)

AFFILIATIONS:

- Engineering & Environmental LB312
- Road, Water, Sewerage & Civil Works BUS270
- Water & Sewerage Products LB283
- Local Government Procurement NSW LGP420

The recognition for the innovative design and quality of our safety access covers and the development of new Combined Dry Media filtration abatement technology resulting on the specification of the McBerns filter range by more than 20 water authorities throughout Australia, New Zealand and other selected countries around the world.

McBerns safety lids chosen as the preferred product for the Christchurch rebuild in New Zealand.

We incorporate Flexibility, Adaptability, Reliability and Innovation into all aspects of our operation, ensuring our clients achieve their best outcomes: Value for Money, Quality Workmanship and Service.



Design

McBerns combines decades of industry experience with a dedicated design team offering specialist knowledge to develop effective solutions for the water and construction industries. Whether it may be a complex odour issue or integrated access cover and void protection system, McBerns product range combines safety in design and value for money.



QLD Division
IPWEA
INSTITUTE OF PUBLIC WORKS
ENGINEERING AUSTRALIA

Member of
AUSTRALIAN WATER
ASSOCIATION



Benefits of using Local Buy QLD & LGP NEW Procurement Partners

REDUCE RISK

- Ensure compliance with Local Government Act and Local Government Regulation
- Reduce legal liability
- Reduce risk of frequent or corrupt activity
- Reduce risk of reputational damage

SAVE TIME

- Access pre-qualified / preferred supplier arrangements
- Negate the need to undertake a full and open tender process
- Enable purchasing staff to focus on planning strategic procurement

SAVE MONEY

- Competitive quotes, based on aggregate buying power
- More effective for suppliers and staff

IMPROVE GOVERNANCE

- Request for Quote (RFQ) process to ensure value for money
- Robust evaluation of suppliers
- Agreed terms and conditions

McBerns is affiliated with the organisations listed below:

- Australian Water Association (AWA)
- The institute of Public Works Engineering Australasia, Queensland (IPWEAQ)
- Water Industry Operators Association (Australia) (WIOA)

These organisations provide business opportunities as we share information and knowledge, connect members with industry and stakeholders, and inspire positive change.

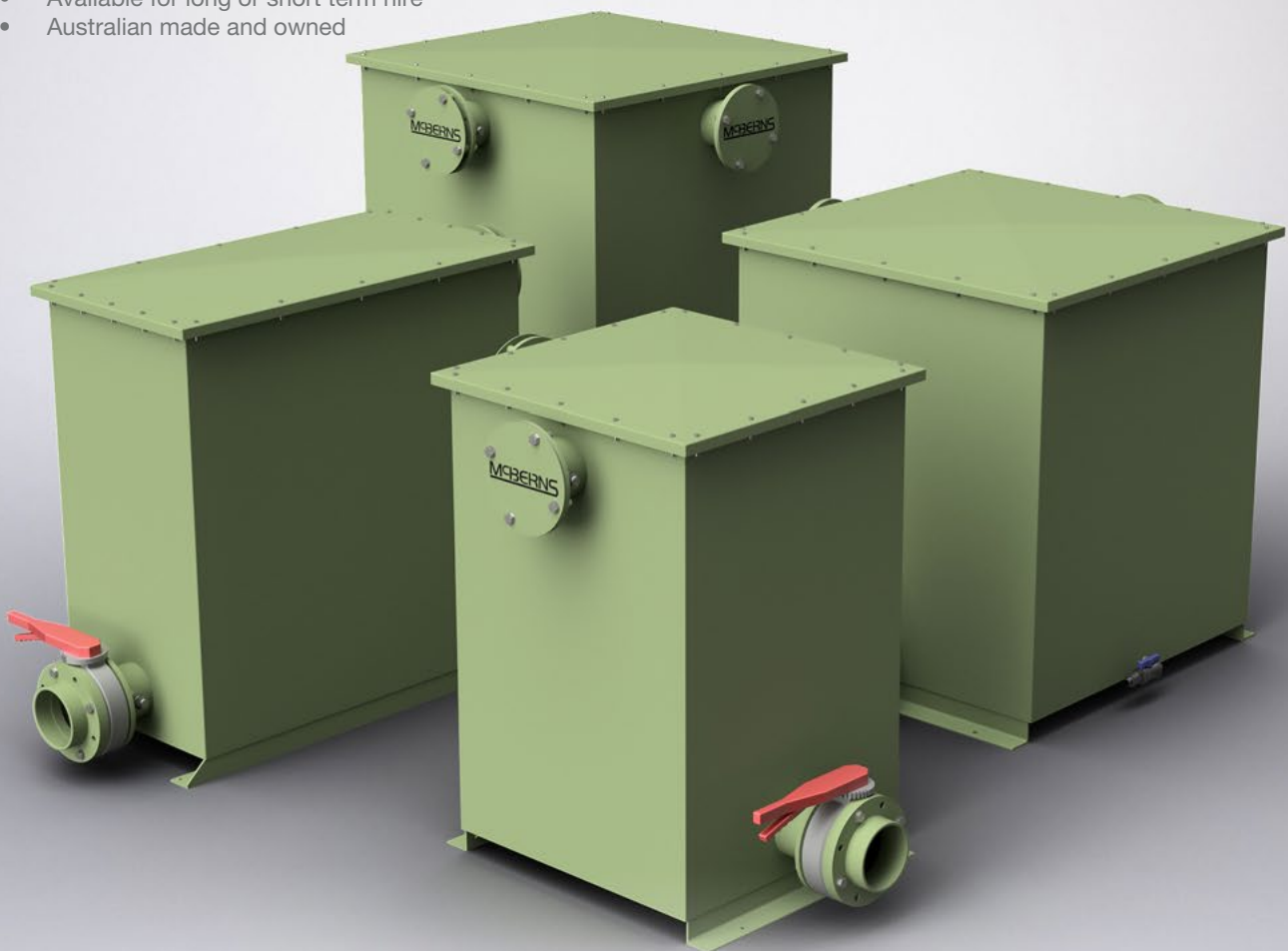
They create a vibrant, vital, supportive community for those engaged in their sectors, which serves to enhance the quality of life for all communities.

Invite Membership from any persons responsible for carrying out the whole, or part operation and maintenance any facet of the Water Industry. These may be derived from the Private or Public Sector.

THE ZC RANGE

Why choose the ZC-Series?

- Combined media filtration: 3 stage treatment
- Treats high to extreme levels of H₂S & vocs
- High airflow rates up to 505 L/s
- Customised design over 505 L/s
- Fast and easy to install - no disruptions
- Relocatable
- No programming or electronics required
- No water or biological organisms
- Suitable for low security sites
- Available for long or short term hire
- Australian made and owned



McBerns Combined Media Odour Filters

- Adsorption & oxidation of odours
- Low operating & maintenance costs
- Passive mode when No mains power required
- Long media life compared to standard carbon filters
- Reduce customer complaints
- Wind assisted or electric fans available
- Quick, safe & easy to install
- Replacement media cartridges
- Size range to suit all sites
- Economical & effective
- Odour logging data support
- Easy & safe servicing
- Can be adapted to any pipe size

FILTERS



ZC 3000 Odour Filter

Part Number:	ZC3000
Description:	Flow rates up to 505 L/s
Application:	Sewage Pump Stations, Manholes, Air Valves, Trunk Sewerage Systems, Packaged Treatment Systems, Sewer Pressure Main Discharge, Treatment Plants
Material / Finish:	Pale Eucalypt Powder Coated Stainless Steel with Chemical Resistant Lining
Dimensions:	1100 W x 3000 D x 1560 H
Weight:	2050 kg
Media Replacement:	10 x F375MC, Activated Carbon, Combined Media



ZC 1500 Odour Filter

Part Number:	ZC1500
Description:	Flow rates up to 300 L/s
Application:	Sewage Pump Stations, Manholes, Air Valves, Trunk Sewerage Systems, Packaged Treatment Systems, Sewer Pressure Main Discharge, Treatment Plants
Material / Finish:	Pale Eucalypt Powder Coated Stainless Steel with Chemical Resistant Lining
Dimensions:	1100 W x 1100 D x 1580 H
Weight:	1050 kg
Media Replacement:	5 x F375MC, Activated Carbon, Combined Media



ZC 1200 Odour Filter

Part Number:	ZC1200
Description:	Flow rates up to 210 L/s
Application:	Sewage Pump Stations, Manholes, Air Valves, Trunk Sewerage Systems, Packaged Treatment Systems, Sewer Pressure Main Discharge, Treatment Plants
Material / Finish:	Pale Eucalypt Powder Coated Stainless Steel with Chemical Resistant Lining
Dimensions:	1100 W x 1100 D x 1300 H
Weight:	880 kg
Media Replacement:	5 x F375MC, Activated Carbon, Combined Media

FILTERS

ZC 300 Odour Filter

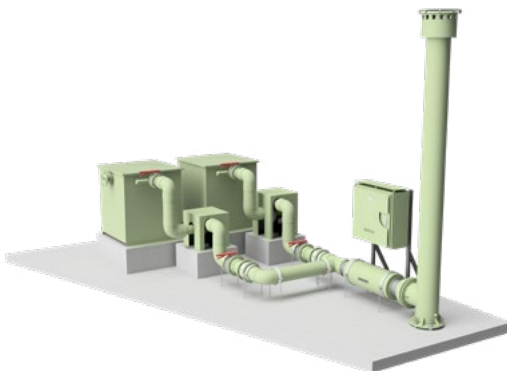


Part Number:	ZC300
Description:	Flow rates up to 120 L/s
Application:	Sewage Pump Stations, Manholes, Air Valves, Trunk Sewerage Systems, Packaged Treatment Systems, Sewer Pressure Main Discharge, Treatment Plants
Material / Finish:	Pale Eucalypt Powder Coated Stainless Steel with Chemical Resistant Lining
Dimensions:	800 W x 800 D x 1230 H
Weight:	380 kg
Media Replacement:	4 x F300MC, Activated Carbon, Combined Media



ZC 450 Odour Filter Slimline

Part Number:	ZC450S
Description:	Flow rates up to 120 L/s
Application:	Designed for limited size spaces, Sewage Pump Stations, Manholes, Air Valves, Trunk Sewerage Systems, Packaged Treatment Systems, Sewer Pressure Main Discharge, Treatment Plants
Material / Finish:	Pale Eucalypt Powder Coated Stainless Steel with Chemical Resistant Lining
Dimensions:	1100 W x 600 D x 1200 H
Weight:	380kg
Media Replacement:	3 x 375MC, Activated Carbon, Combined Media



Custom Design Solutions

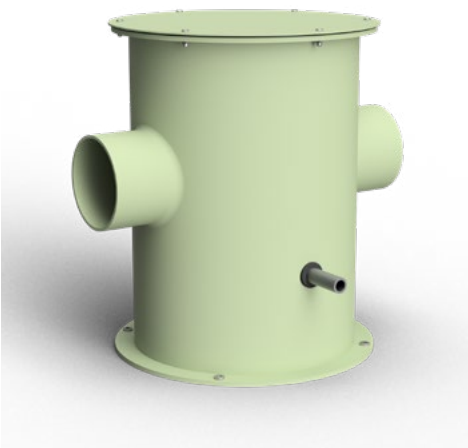
Part Number:	Custom Designed Filter
Description:	Custom Designed
Application:	Various filter design configurations with monitoring included as an option
Material / Finish:	Pale Eucalypt Powder Coated Stainless Steel with Chemical Resistant Lining
Dimensions:	Custom Designed
Weight:	Variable

FILTERS



Air Valve 300 Odour Filter

Part Number:	ARV300
Description:	Flow rates from 60 L/s
Application:	Above Ground Air Valves
Material / Finish:	Pale Eucalypt Powder Coated Stainless Steel with Chemical Resistant Lining
Dimensions:	1070W x 800D x 1775H
Weight:	Variable
Media Replacement:	4 X F300MC



Pre Filter 375

Part Number:	PF375
Description:	Flow rates to design
Application:	Intended to remove moisture, fats, grease and particulate matter from the airstream
Material / Finish:	PVC Painted pale eucalypt
Weight:	30 kg
Media Replacement:	Airmist Filter



Under Manhole Filter

Part Number:	UMH300HD
Description:	Flow rates up to 15 L/s
Application:	Manholes, Custom orders to suit
Material / Finish:	Stainless Steel with Chemical Resistant Lining
Dimensions:	Custom Designed
Weight:	Variable
Media Replacement:	1 x F300MC

THE HDPE RANGE

Why choose a HDPE Filter ?

- Corrosion & chemical resistant
- Increased design life
- Strong & durable
- No coating required
- Non-toxic
- Custom built



FILTERS



Multi Stage Odour Filter

Part Number:	ZCPERMULT
Description:	Flow rates up to 1000 L/s +
Application:	Sewage Pump Stations, Manholes, Air Valves, Trunk Sewerage Systems, Packaged Treatment Systems, Sewer Pressure Main Discharge, Treatment Plants
Material / Finish:	HDPE, Black
Dimensions:	Custom Designed
Weight:	Variable
Media Replacement:	F300PMC, Activated Carbon, Combined Media, McBiomedica



HDPE 8000 Odour Filter

Part Number:	ZCPER8000
Description:	Flow rates up to 1000 L/s +
Application:	Sewage Pump Stations, Manholes, Air Valves, Trunk Sewerage Systems, Packaged Treatment Systems, Sewer Pressure Main Discharge, Treatment Plants
Material / Finish:	HDPE, Black
Dimensions:	Custom Designed
Weight:	Variable
Media Replacement:	F300PMC, Activated Carbon, Combined Media



HDPE 300/1200/1500 Odour Filter

Part Number:	ZCPES 300/1200/1500
Description:	Flow rates up to 300 L/s
Application:	Sewage Pump Stations, Manholes, Air Valves, Trunk Sewerage Systems, Packaged Treatment Systems, Sewer Pressure Main Discharge, Treatment Plants
Material / Finish:	HDPE, Black
Dimensions:	Custom Designed
Weight:	Variable
Media Replacement:	F300PMC, Activated Carbon, Combined Media



HDPE 300/1200/1500 Odour Filter

Part Number:	ZCPER 300/1200/1500
Description:	Flow rates up to 210 L/s
Application:	Sewage Pump Stations, Manholes, Air Valves, Trunk Sewerage Systems, Packaged Treatment Systems, Sewer Pressure Main Discharge, Treatment Plants
Material / Finish:	HDPE, Black
Dimensions:	Custom Designed
Weight:	Variable
Media Replacement:	F300PMC, Activated Carbon, Combined Media



Below Ground Filter

Part Number:	BG300A
Description:	Flow rates from 100 L/s
Application:	Sewage Pump Stations, Manholes, Air Valves
Material / Finish:	HDPE Filter with Aluminium Access Cover
Dimensions:	964 H x 888 W (Diameter)
Media Replacement:	4 X F300MC, Activated Carbon, Combined Media

GM FILTER RANGE



Why choose a Ground Mount Filter ?

- A preferred replacement for old corroded vent poles
- Easy installation and safe servicing at ground level
- Suitability for commercial scale odour problems
- Will last for many years exposed to harsh elements
- Robust vandal-proof and compact construction
- Fully rechargeable with our specially formulated McBerns combined media cartridges
- Australian made and owned

FILTERS



GM 700 Odour Filter

Part Number:	GM700
Description:	Flow rates from 60 L/s
Application:	Manholes, air valves
Material / Finish:	PVC Painted pale eucalypt
Dimensions:	870 W x 470 D x 680 H
Weight:	105 kg
Media Replacement:	4 X F375MC



GM 450 Odour Filter

Part Number:	GM450
Description:	Flow rates from 45 L/s
Application:	Manholes, air valves
Material / Finish:	PVC Painted pale eucalypt
Dimensions:	460 W x 470 D x 750 H
Weight:	95 kg
Media Replacement:	3 X F375MC



GM 375 Odour Filter

Part Number:	GM375
Description:	Flow rates from 30 L/s
Application:	Manholes, air valves
Material / Finish:	PVC Painted pale eucalypt
Dimensions:	460W x 470D x 660H
Weight:	58 kg
Media Replacement:	2 X F375MC



GM 375 Top Mount Odour Filter

Part Number:	GM375T
Description:	Flow rates from 30 L/s
Application:	Manholes, Air Valves, Vent Poles
Material / Finish:	PVC painted pale eucalypt
Dimensions:	461 W x 470 D x 660 H
Weight:	58 kg
Media Replacement:	2 X F375MC

FILTERS

GM 300 Odour Filter



Part Number:	GM300
Description:	Flow rates from 15 L/s
Application:	Sewage pump stations, receiving manholes, used on storage tanks
Material / Finish:	PVC painted pale eucalypt
Dimensions:	350 W x 410 D x 410 H
Weight:	20kg
Media Replacement:	1 X F300MC

GM 150 Odour Filter



Part Number:	GM150
Description:	Flow rates from 5 L/s
Application:	Sewage pump stations, receiving manholes, grease traps
Material / Finish:	PVC painted pale eucalypt
Dimensions:	470 H x 260 W (Diameter)
Weight:	5 kg
Media Replacement:	1 X F150MC

FILTERS



Vent Filter - 300mm

Part Number:	VF300
Description:	Flow rates up to 15 L/s
Application:	Pump stations
Material / Finish:	PVC painted pale eucalypt
Dimensions:	44 W x 44 D x 49 H
Weight:	23 kg
Media Replacement:	1 X F300MC



Vent Filter - 150mm

Part Number:	VF150
Description:	Flow rates up to 5 L/s
Application:	Small pump stations, grease traps, domestic use
Material / Finish:	PVC painted pale eucalypt
Dimensions:	30 W x 30 D x 31 H
Weight:	3 kg
Media Replacement:	1 X F150MC



Vent Filter - 100mm

Part Number:	VF100
Description:	Flow rates up to 2 L/s
Application:	Small pump stations, grease traps, domestic use
Material / Finish:	PVC painted pale eucalypt
Dimensions:	30 W x 30 D x 31 H
Weight:	1 kg
Media Replacement:	1 X F100MC



Vent Filter - 100mm Disposable

Part Number:	VF100D
Description:	Flow rates up to 2 L/s
Application:	Domestic Sewer and Grease Trap Vent Pipe Odour Control
Material / Finish:	White / Grey PVC
Dimensions:	50 W x 78 D x 117 H
Weight:	1 kg
Media Replacement:	N/A



Vent Filter - 50mm

Part Number:	VF50
Description:	Flow rates up to 1 L/s
Application:	Domestic sewer and grease trap vent pipe odour control
Material / Finish:	White / Grey PVC
Dimensions:	50 W X 85 D X 126 H
Weight:	0.4 kg
Media Replacement:	NA

FILTERS



Vent Filter 300mm Fan

Part Number:	VF300FAN
Description:	Flow rates up to 15 L/s, Fan is Powder Coated Aluminium
Application:	Sewer vent stacks, grease trap vents, pump stations
Material / Finish:	Powder coated aluminium
Dimensions:	300 W x 480 D x 770 H
Weight:	18 kg
Media Replacement:	F300MC



Vent Filter 100/150mm Fan

Part Number:	VF100FAN/VF150FAN
Description:	Flow rates up to 2-5 L/s
Application:	Domestic sewer and grease trap vent pipe odour control
Material / Finish:	Powder coated aluminium
Dimensions:	30 W x 30 D x 31 H
Weight:	5 kg
Media Replacement:	F100MC/F150MC



Vent Filter - 100/150mm PVC Fan

Part Number:	VF100PVCFAN/VF150PVCFAN
Description:	Flow rates up to 2-5 L/s
Application:	Domestic, grease traps and small pump stations
Material / Finish:	White / Grey PVC
Dimensions:	150 W x 200 D x 400 H
Weight:	5 kg
Media Replacement:	F100MC/F150MC

Part Number:	Name:	Description:	Application:	Material / Finish:
VPOLETOPVF300	Vent Pole VF 300 Filter	VF300 to suit DN150 or DN300 Vent Pole (inc adapt)	Sewer vent stacks, grease trapvents, pump stations	PVC painted pale eucalypt
VPOLETOPVF300FAN	Vent Pole 300 Fan & Filter	VF300 Fan to suit DN150 or DN300 Vent Pole (inc adapt)	Sewer vent stacks, grease trap vents, pump stations	PVC painted pale eucalypt
VPOLETOPFH300	Vent Pole 300 Fan	FH300 Fan to suit DN150 or DN300 Vent Pole (inc adapt)	Sewer vent stacks, grease trap vents, pump stations	PVC painted pale eucalypt
VPOLETOPCOWL	Vent Pole Top Cowl	300 Weather Cap Cowl to Suit DN150 or DN300 Vent Pole (inc adapt)	Sewer vent stacks, grease trap vents, pump stations	PVC painted pale eucalypt

VPOLETOPVF300

VPOLETOPVF300FAN

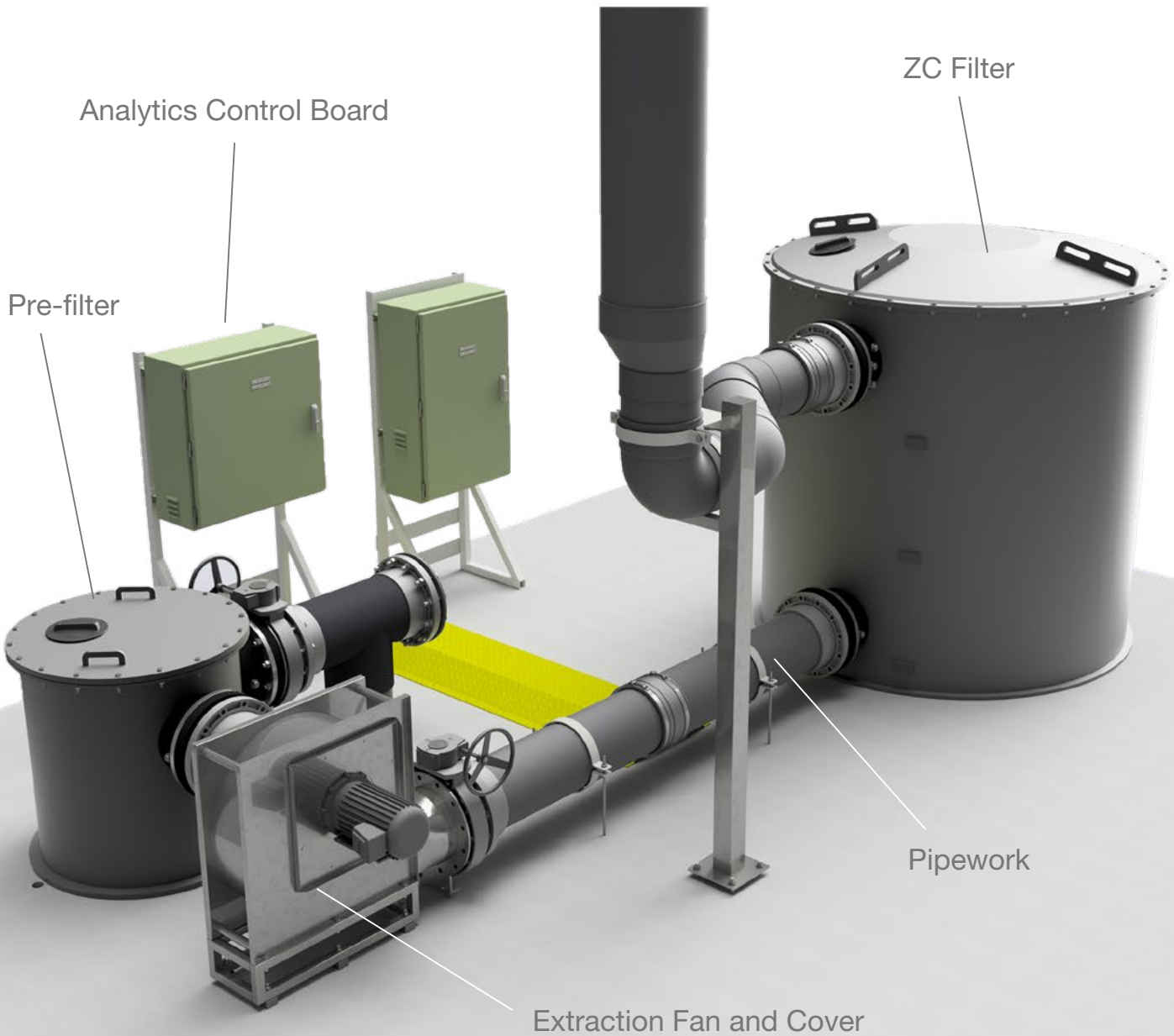
VPOLETOPFH300

VPOLETOPCOWL



FILTERS

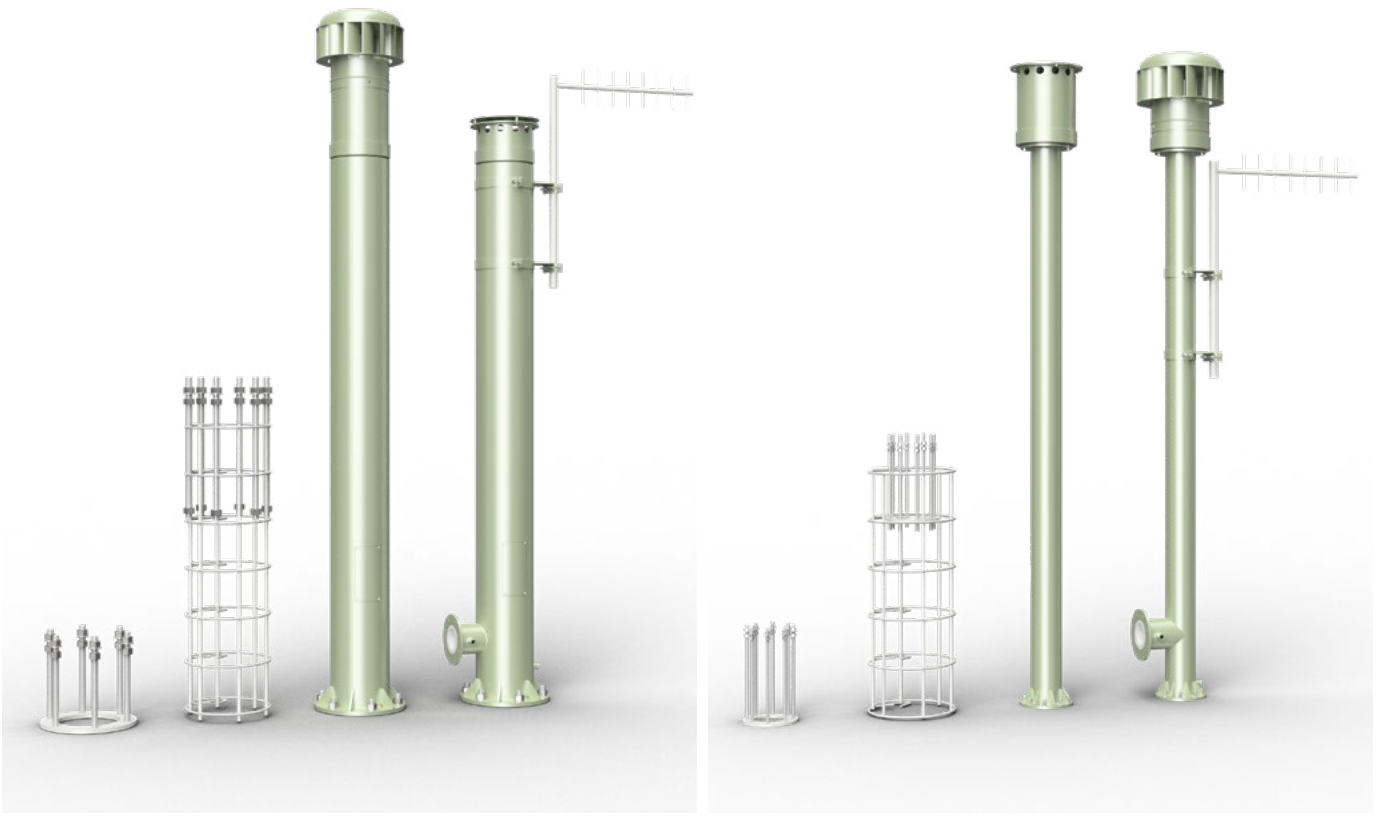
Odour Filter Design and Installation



VENT POLES



VENT POLES

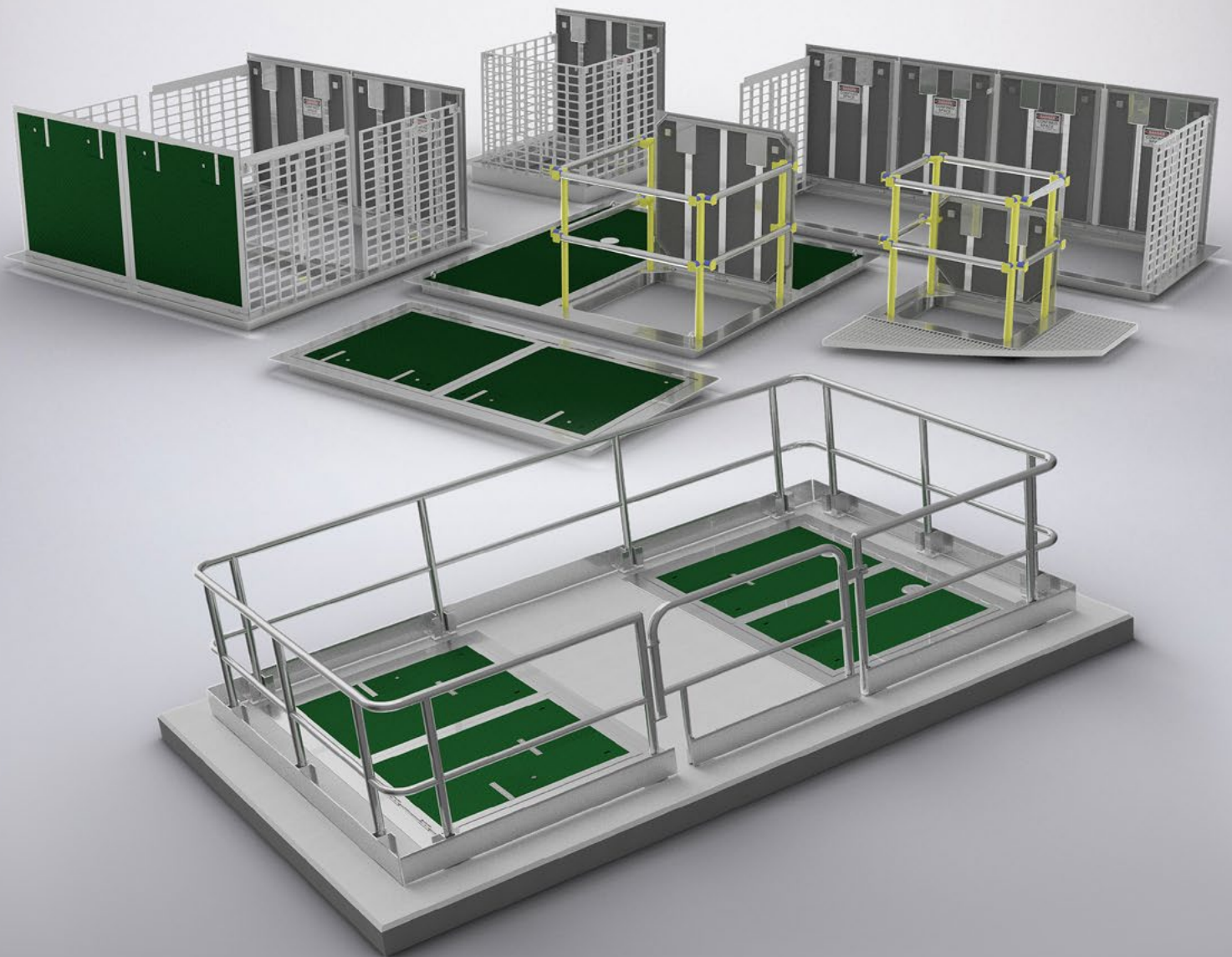


Part Number:	Name:	Description:	Application:	Material / Finish:
VPOLE150	Vent Pole - 150mm	DN 150mm Vent Pole - Straight through	Sewer vent stacks, grease trap vents, pump stations	Galvansied steel, powdercoated pale eucalypt
VPOLE150INLET	Vent Pole - Side Inlet 150mm	DN 150mm Vent Pole - Side Inlet	Sewer vent stacks, grease trap vents, pump stations	Galvansied steel, powdercoated pale eucalypt
VPOLE300	Vent Pole - 300mm	DN 300mm Vent Pole - Straight through	Sewer vent stacks, grease trap vents, pump stations	Hot dip galvansied steel, powdercoated pale eucalypt
VPOLE300INLET	Vent Pole - Side Inlet 300mm	DN 300mm Vent Pole - Side Inlet	Sewer vent stacks, grease trap vents, pump stations	Hot dip galvansied steel, powdercoated pale eucalypt
VPCAGE150PAD	Vent Pole Cage 150mm Pad	Footing Cage for 150mm Vent Pole PAD mounted	Sewer vent stacks, grease trap vents, pump stations	Mild steel
VPCAGE150PIER	Vent Pole Cage 150mm Pier	Footing Cage for 150mm Vent Pole PIER mounted	Sewer vent stacks, grease trap vents, pump stations	Mild steel
VPCAGE300PAD	Vent Pole Cage 300mm Pad	Footing Cage for 300mm Vent Pole PAD mounted	Sewer vent stacks, grease trap vents, pump stations	Mild steel
VPCAGE300PIER	Vent Pole Cage 300mm Pier	Footing Cage for 300mm Vent Pole PIER mounted	Sewer vent stacks, grease trap vents, pump stations	Mild steel

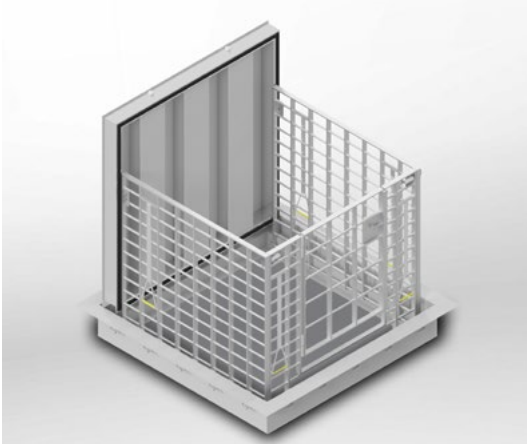
ACCESS COVERS

Why choose a McBerns Access Cover?

- Exclusive McBerns frame extrusion
- Custom made to suit site requirements
- 4 side void protection safety grate system with removable front grate and also swing gate
- Design, fabrication and installation service
- A, B, C & D load rate tested
- Lightweight lift
- Flush mounted or mounted on hob
- Hinged safety grates (removable)
- Safety Rail System
- Australian Made and Owned

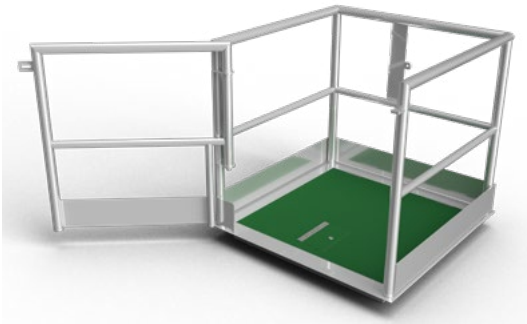


ACCESS COVERS



Premium Certified Gas & Airtight Safety Access Cover

Part Number:	LFBPM
Description:	Aluminium safety access cover - premium, gas & airtight
Application:	Sewage pump stations, manholes, air valves, water pits, electrical pits, certified gas / water tight, class load a-d
Material / Finish:	Gas & air tight aluminium frame, non slip coating, Optional colours
Dimensions:	Custom to suit your site requirements
Weight:	Dependent on lid load rating
General Specifications:	AS3996:2019, AS4586:2013, AS/NZS1665:2007



Premium Certified Gas & Airtight with Safety Rail Option Safety Access Cover

Part Number:	LFBPMHR
Description:	Aluminium safety access cover - premium, certified gas / water tight, with safety rail option, class load a,b
Application:	Sewage pump stations, manholes, air valves, water pits, electrical pits
Material / Finish:	Gas & air tight aluminium frame, non slip coating, Optional colours
Dimensions:	Min 600 x 600 or custom to suit your site requirements
Weight:	Each lid lift weight designed < 20 kg
General Specifications:	AS3996:2019, AS4586:2013, AS/NZS1665:2007



4 Side Void Protection Safety Access Cover

Part Number:	LFVFP
Description:	Aluminium safety access cover - 4 side void 2 section, available as multiple section
Application:	Sewage pump stations, manholes, air valves, water pits
Material / Finish:	Aluminium frame, non slip coating, optional colours
Dimensions:	1050 x 1050 or custom to suit your site requirements
Weight:	Each lid lift weight designed < 20 kg
General Specifications:	AS3996:2019, AS4586:2013, AS/NZS1665:2007



4 Side Void Protection Inclusive of Gate Safety Access Cover

Part Number:	LFVPGATE
Description:	Aluminium safety access cover - lfvp inclusive gate
Application:	Sewage pump stations, manholes, air valves, water pits
Material / Finish:	Aluminium frame, non slip coating, optional colours
Dimensions:	1050 x 1050 or custom to suit your site requirements
Weight:	Each lid lift weight designed < 20 kg
General Specifications:	AS3996:2019, AS4586:2013, AS/ NZS1665:2007

ACCESS COVERS

Safety Access Cover Flush Mount



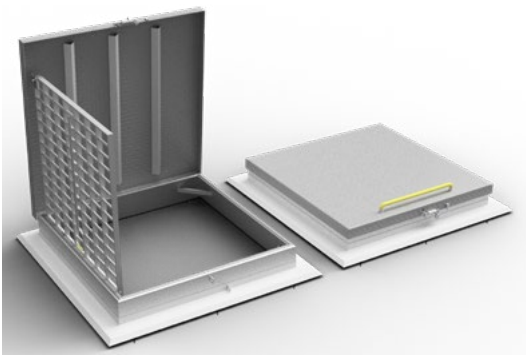
Part Number:	LFM
Description:	Aluminium safety access cover - flush mount 2 section, available as multiple section openings
Application:	Retro fitting, sewage pump stations, manholes, air valves, water pits
Material / Finish:	Aluminium frame, non slip coating, optional colours
Dimensions:	Custom to suit your site requirements
Weight:	Each lid lift weight designed < 20 kg
General Specifications:	AS3996:2019, AS4586:2013, AS/NZS1665:1997

Low Profile Safety Access Cover



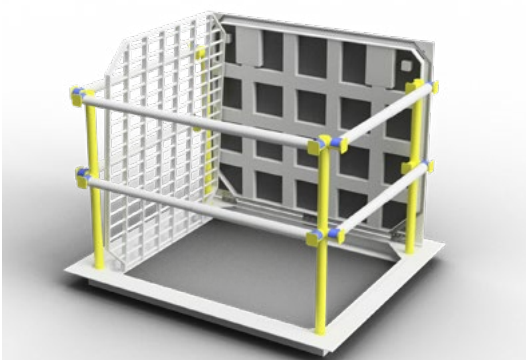
Part Number:	LPL
Description:	Aluminium safety access cover - low profile lid, available as multiple section openings
Application:	Used to replace heavy gatic lids, economic alternative, load rating "a" only
Material / Finish:	Aluminium frame, non slip coating, optional colours
Dimensions:	Custom to suit your site requirements
Weight:	Each lid lift weight designed < 20 kg
General Specifications:	AS3996:2019, AS4586:2013, AS/NZS1665:2007

Certified Reservoir Safety Access Cover



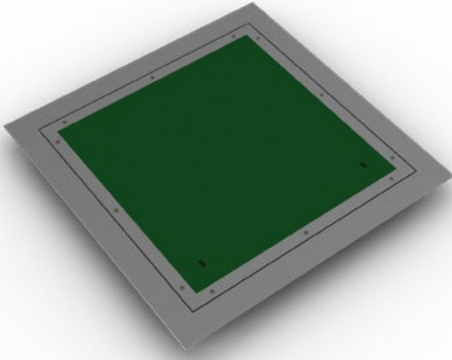
Part Number:	LRES
Description:	Approved reservoir lid aluminium safety access cover - flush mount 1 section
Application:	Retro fitting, water pump stations, manholes, air valves, water pits, reservoirs
Material / Finish:	Aluminium frame, non slip coating, optional colours
Dimensions:	1200 x 1200 or Custom to suit your site requirements
Weight:	Each lid lift weight designed < 20 kg
General Specifications:	AS3996:2019, AS4586:2013, AS/NZS1665:2007

Post and Rail Safety Access Cover



Part Number:	LFPR
Description:	Aluminium safety access cover - post & rail, available as multiple section openings
Application:	Sewage pump stations, manholes, air valves, water pits
Material / Finish:	Aluminium frame, non slip coating, optional colours
Dimensions:	Min 600 x 600 or Custom to suit your site requirements
Weight:	Each lid lift weight designed < 20 kg
General Specifications:	AS3996:2019, AS4586:2013, AS/NZS1665:2007

ACCESS COVERS



Bolt Down Lid Safety Access Cover

Part Number:	LBOLTDN
Description:	Aluminium safety access cover bolt down water tight
Application:	Designed for water and sewerage, telecommunication and electrical pits
Material / Finish:	Aluminium frame, non slip coating, optional colours
Dimensions:	Custom to suit your site requirements
Weight:	Each lid lift weight designed < 20 kg
General Specifications:	AS3996:2019, AS4586:2013, AS/NZS1665:2007



Grated Safety Access Cover

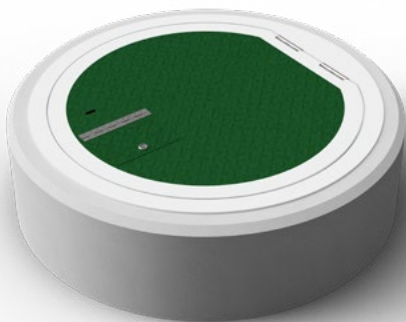
Part Number:	LFGC
Description:	Grated access cover, lightweight and hinged
Application:	Water and sewerage valve pits and walkways
Material / Finish:	Grated finish
Dimensions:	Custom to suit your site requirements
Weight:	Variable
General Specifications:	AS3996:2019, AS4586:2013, AS/NZS1665:2007

4 Side Void with Telescopic Rail Safety Access Cover



Part Number:	LFVPT
Description:	Aluminium safety access cover - four side void telescopic rail
Application:	Ideally used with smaller opening LFVP to achieve required height
Material / Finish:	Aluminium frame, non slip coating, optional colours
Dimensions:	Min 750 x 750 Clear opening
Weight:	Each lid lift weight designed < 20 kg
General Specifications:	AS3996:2019, AS4586:2013, AS/NZS1665:2007

Custom Round Safety Access Cover



Part Number:	LFMC
Description:	Aluminium Safety Access Cover - round to custom design
Application:	Designed to suit circular opening can be bolt or hinge, Water pits
Material / Finish:	Aluminium frame, non slip coating, optional colours
Dimensions:	Min 900mm Diameter ID
Weight:	Each lid lift weight designed < 20 kg
General Specifications:	AS3996:2019, AS4586:2013, AS/NZS1665:2007

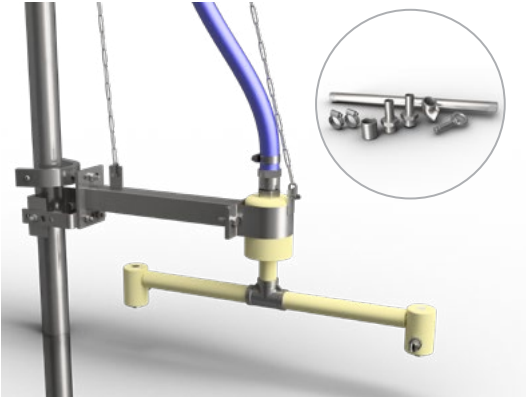
WELL WASHERS



Why choose a McBerns Well Washer?

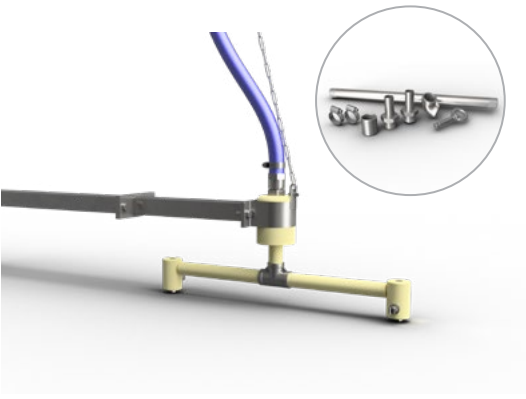
- Eliminates fat & grease build up on infrastructure & Walls
- No power required
- Operates with mains pressure water
- Uses less than 100 lts water per/day
- Cleaner level sensor probes
- Reduces overflows caused by fogs
- Reduces odour
- Reduces confined space entries
- Reduces infrastructure corrosion
- Reduces maintenance
- Improved safety at pump stations
- Reduces customer complaints
- Healthier environment
- Optional pre-programmed with 5 cleaning cycle durations

WELL WASHERS



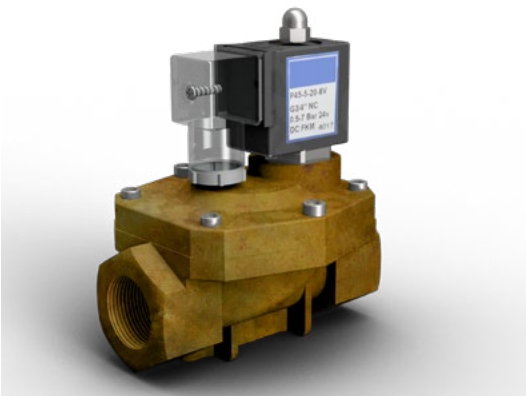
Well Washer Kit Guide Rail Mount

Part Number:	WWKITGRMOUNT
Description:	Kit includes washer, brackets and install hose & fittings
Application:	Eliminates fat & grease build up on infrastructure and walls
Material / Finish:	Austlon, 316 S/S
Weight:	6 kg
General Specifications:	40/60 PSI, 30 l/min, 5-6m (Diameter)



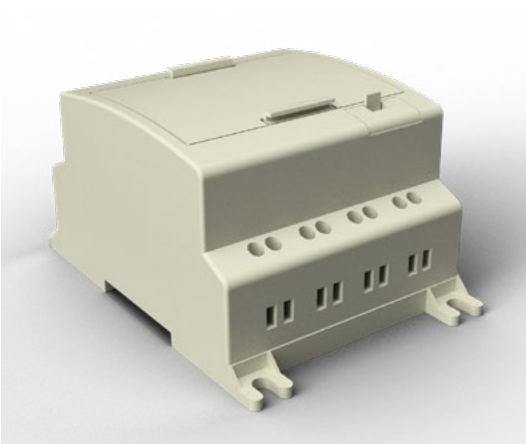
Well Washer Kit Wall Mount

Part Number:	WWKITWALLMOUNT
Description:	Kit includes washer, brackets and install hose & fittings
Application:	Eliminates fat & grease build up on infrastructure and walls
Material / Finish:	Austlon, 316 S/S
Weight:	6 kg
General Specifications:	40/60 PSI, 30 l/min, 5-6m (Diameter)



Optional Solenoid Valve

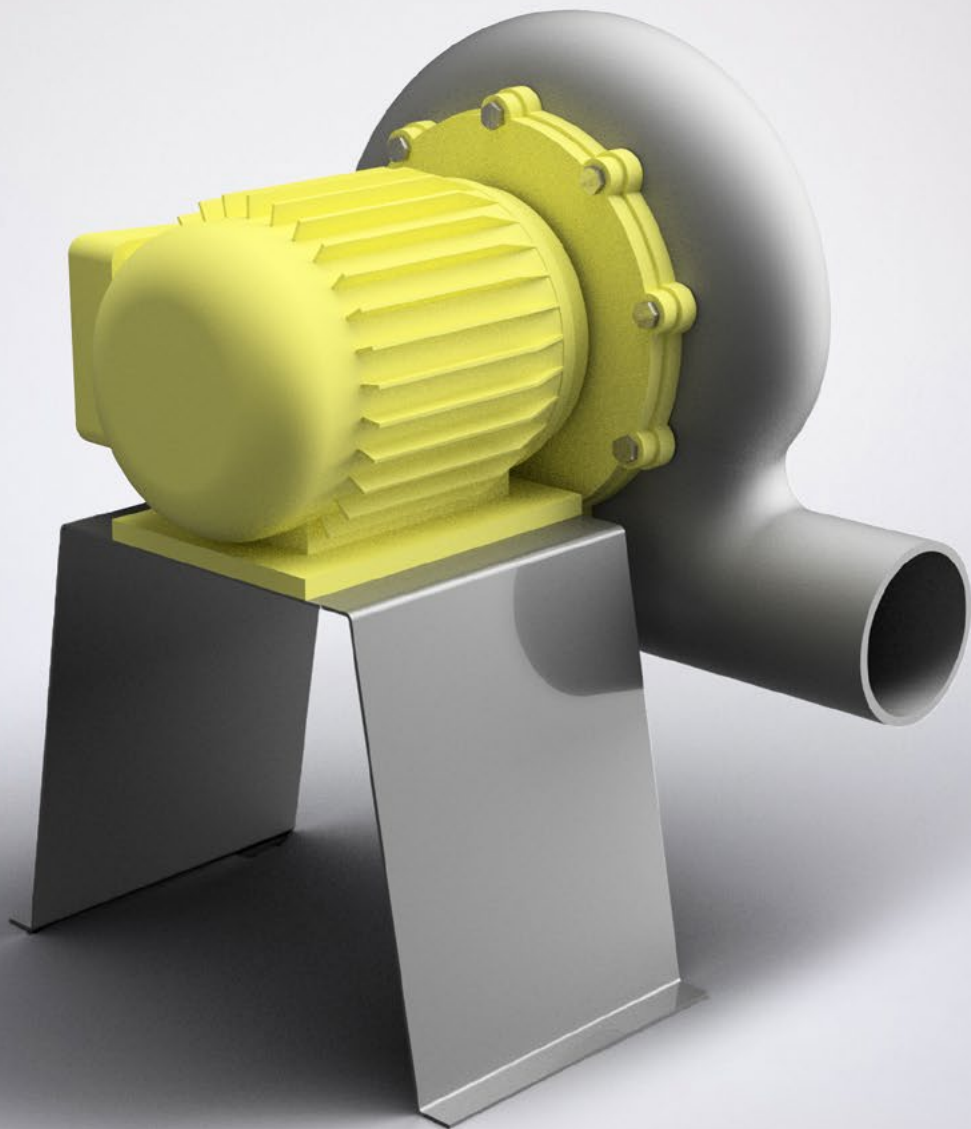
Part Number:	WWSOLENOID
Description:	Optional Solenoid Valves for water supply
Application:	Once energised allows water to flow to wellwasher
Material / Finish:	Brass
Weight:	500 g
General Specifications:	Continuous operation 100% ED c/w LED connector plug IP65



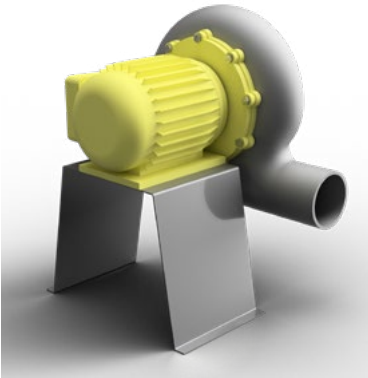
Optional Pre-Programmed Allen-Bradley Micro810 Smart Relay

Part Number:	WWTIMER
Description:	Pre programmed with 5 cleaning cycle durations
Application:	Water Conservation, Minimise manual control
Material / Finish:	PVC
Weight:	500 g
General Specifications:	Less than 100 L daily

FANS

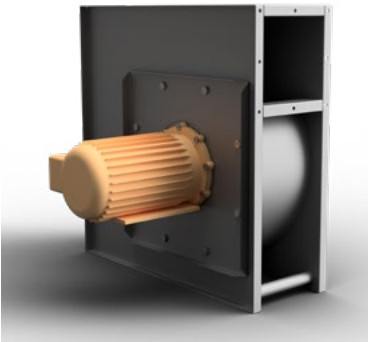


FANS



Storm Extraction Fans

Part Number	Description	Application	RPM	Total Pa	M ³ / hr	dBA	Inlet	Motor
FSTORM10	STORM 10 Extraction Fan with Isolating Switch	Extraction of Highly corrosive gases	1425 - 3440	500 - 600	50 - 200	61 - 85	75mm	Direct
FSTORM10V240	STORM 10 240V Extraction Fan		1425 - 3441	50 - 600	50 - 200	61 - 85	75mm	
FSTORM12	STORM 12 Extraction Fan with Isolating Switch		1450 - 3300	200 - 1200	100 - 550	83 - 100	90mm	
FSTORM16	STORM 16 Extraction Fan with Isolating Switch		1450 - 3300	250 - 3000	500 - 1800	90 - 114	160mm	
FSEAT25	SEAT25 Extraction Fan with Isolating Switch		730 - 2870	60 - 1400	500 - 2500	84 - 89	200mm	



SDF Extraction Fan Range

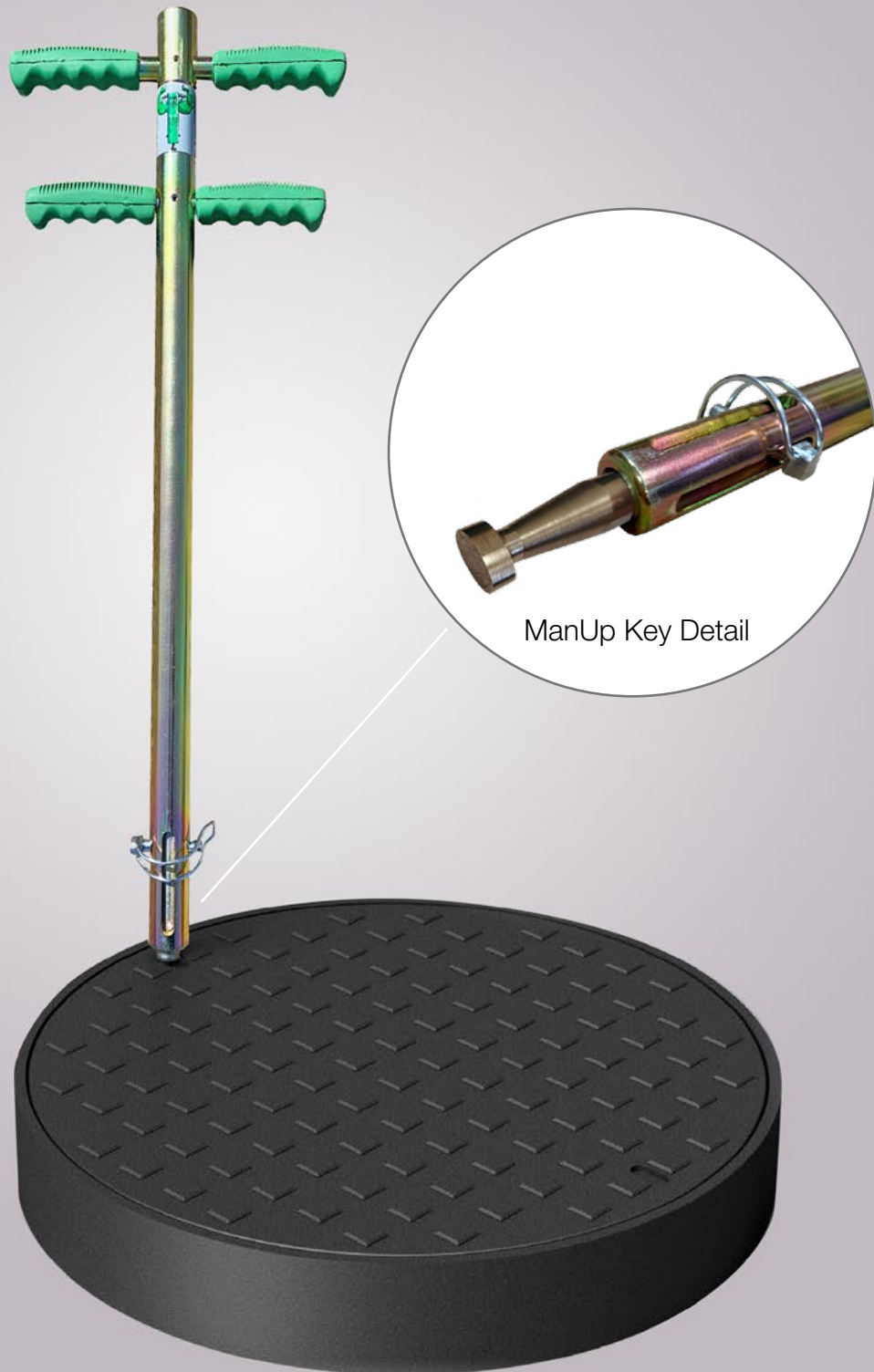
Part Number:	FSDFFAN
Description:	SDF Extraction Fan Range
Application:	Extraction of Highly corrosive gases
Material / Finish:	To design
RPM:	2891
Motor Drive:	Direct

Inline Induction and Extraction Fans



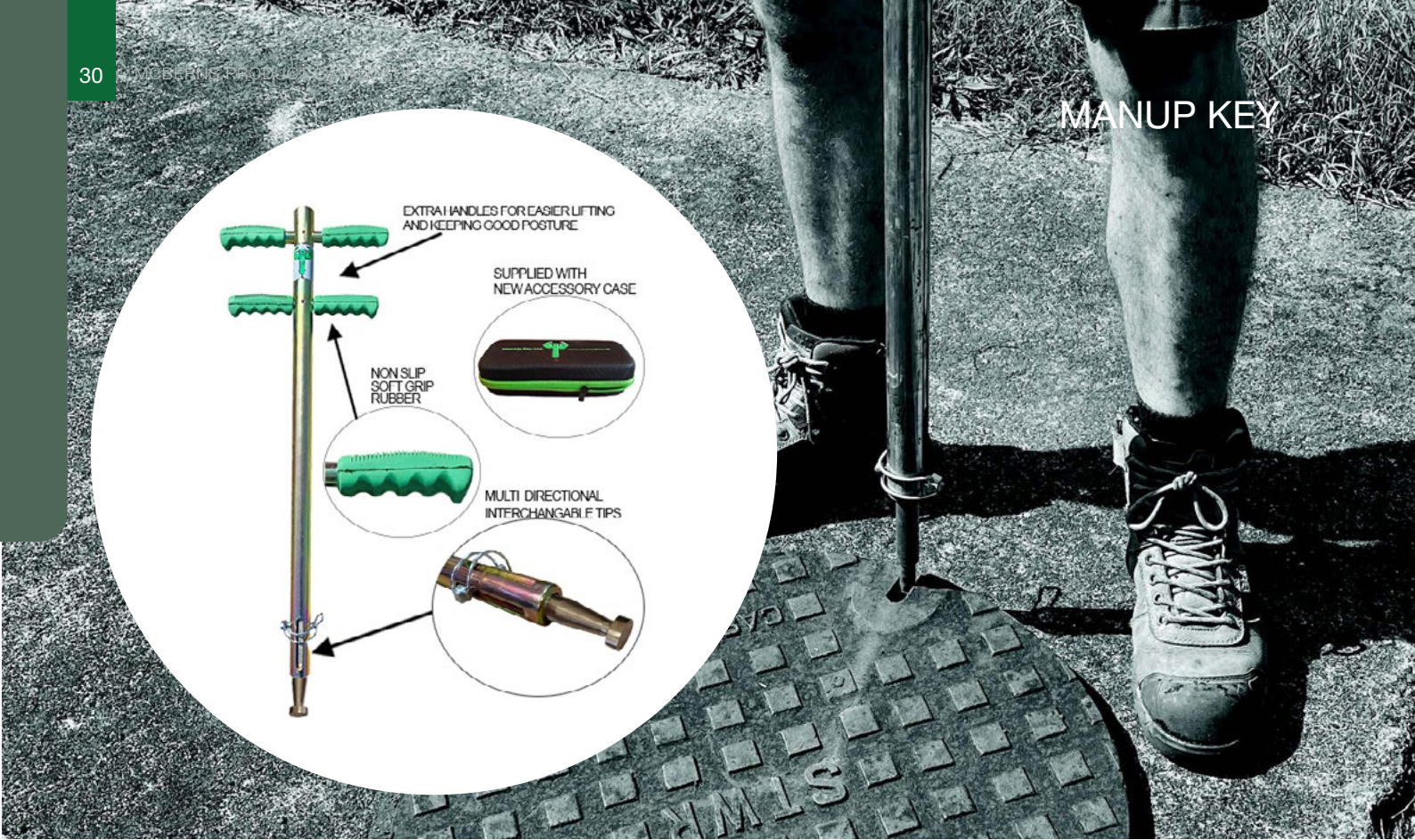
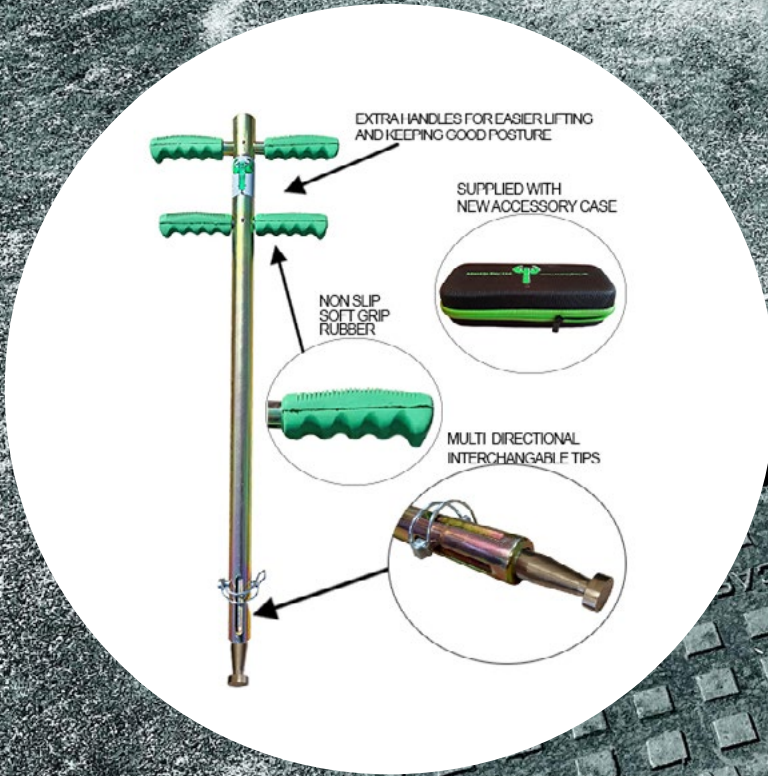
Part Number	Description	Application	RPM	Watts	Amps	M ³ / hr	dBA
FTMF100	TMF Inline Duct Fan 100mm, Air In / Extract Out	High Pressure, Powerful airflow, Low noise, direct air to Pump Station, Dry Wells and Electrical Rooms	1980-2545	0.023-0.025	0.10-0.11	170-220	27- 32
FTMF125	TMF Inline Duct Fan 125mm, Air In / Extract Out		1935-2265	0.025-0.030	0.11-0.15	230-345	27- 32
FTMF150	TMF Inline Duct Fan 150mm, Air In / Extract Out		1940-2620	0.042-0.050	0.18-0.26	430.5-560	34- 45
FTMF200	TMF Inline Duct Fan 200mm, Air In / Extract Out		1915-2380	0.076-0.108	0.34-0.48	805-1080	44- 52
FTMF250	TMF Inline Duct Fan 250mm, Air In / Extract Out		1955-2440	0.125-0.177	0.54-0.79	1070-1360	47- 55
FTMF315	TMF Inline Duct Fan 315mm, Air In / Extract Out		2115-2505	0.227-0.315	0.99-1.42	1420-1750	47- 56

MANUP KEY



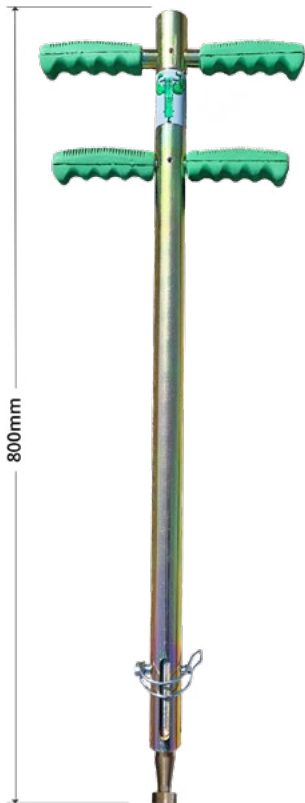
ManUp Key Detail

MANUP KEY

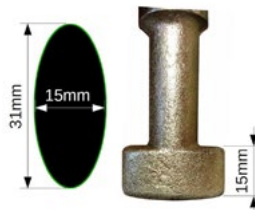


ManUp Key

ManUp Key Accessories

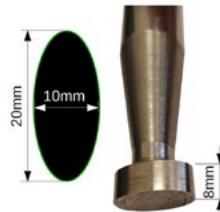


Part Number	MANUPKEY
Description	Tool complete with 3 x tips = 1 x hook and 2 x oval tips
Application	Fits any access cover with a keyhole size of approximately 20mm
Weight	8kg



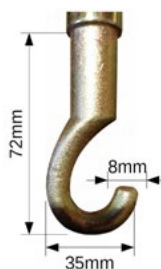
31mm oval Tip

Part Number	008O30
Dimensions (L x D)	160 x 20mm
Head Size	31mm (L) x 15mm (D) Oval Shape
Weight	0.3kg
Material	Steel
Application	Fits any manhole or access cover with a 31mm x 15mm oval shaped keyhole



20mm Oval Tip

Part Number	009O20
Dimensions (L x D)	160 x 20mm
Head Size	20mm x 10mm oval Shape
Weight	0.3kg
Material	Steel
Application	Fits any access cover with a 20mm x 10mm oval shaped keyhole




8mm Hooked Tip

Part Number	010CHK
Dimensions (L x D)	182 x 20mm
Head Size	8mm hook
Weight	0.3kg
Material	Steel
Class	Light Duty
Application	Generally used within the Australian market, 8mm 'C' Shaped Hook for use in many different kinds of light gully covers

MANUP KEY

ManUp Valve Key Kit


ManUp Valve Key Kit Inclusions



1220mm

640mm


Dimensions (L x D) | 1220 x 35mm
 Handle Length | 640mm
 Weight | 6.2kg
 Material | Plated Steel



Cleaning Tip – 006J08

Dimensions (L x D) | 174 x 20mm
 Head Size | tapered Point
 Weight | 0.3kg
 Material | Steel
 Class | Light Duty
 Application | A pointed hook, ideal for cleaning out the dirt and grit that becomes clogged in access cover keyholes over time

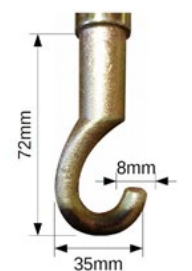
Useage
 Drainage
 Gas
 Electricity
 Telecoms
 Pest Control
 Fire Service
 Drinking Water



10mm J Tip – 007J10

Dimensions (L x D) | 174 x 20mm
 Head Size | 20mm (L) x 10mm (D) 'J' Shape
 Weight | 0.3kg
 Material | Steel
 Class | Medium Duty
 Application | A10mm j shped hook can be used on many different types of access covers and gulleys

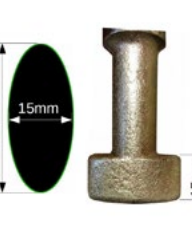
Useage
 Drainage
 Gas
 Electricity
 Telecoms
 Pest Control
 Fire Service
 Drinking Water



8mm Hooked Tip – 010CHK

Dimensions (L x D) | 182 x 20mm
 Head Size | 8mm Hook
 Weight | 0.3kg
 Material | Steel
 Class | Light Duty
 Application | Generally used within the Australian market, 8mm 'C' Shaped Hook for use in many different kinds of light gulley covers

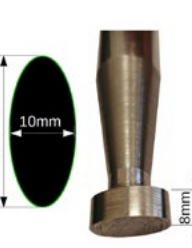
Useage
 Drainage



31mm Oval Tip – 008030

Dimensions (L x D) | 160 x 20mm
 Head Size | 31mm (L) x 15mm (D) Oval Shape
 Weight | 0.3kg
 Material | Steel
 Class | Light Duty
 Application | Fits any manhole or access cover with a 31mm x 15mm oval shaped keyhole

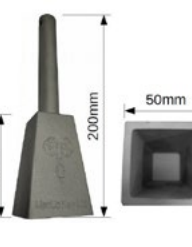
Useage
 Drainage



20mm Oval Tip - 009020

Dimensions (L x D) | 160 x 20mm
 Head Size | 20mm x 10mm oval Shape
 Weight | 0.3kg
 Material | Steel
 Class | Light Duty
 Application | Fits any access cover with a 20mm x 10mm oval shaped keyhole

Useage
 Drainage
 Gas
 Electricity
 Telecoms
 Pest Control
 Fire Service
 Drinking Water



Fire Hydrant Valve Key – 011HYD

Dimensions (L x D) | 200 x 20mm
 Head Size | 50mm x 50mm Tapered Square
 Weight | 0.5kg
 Material | Case Steel
 Class | Heavy Duty
 Application | The stop tap valve key, designed specifically for use with the ManUp Key's slide hammer action to prevent the key getting stuck on valves

Useage
 Fire Service
 Drinking Water

Retaining Pin

Linch pin generally used in The ManUp Key bar to retain the tips to the tool Each ManUp Key kit includes 2 x Retaining pins



Accessories case

Included with every complete kit



DATA ANALYTICS



DATA ANALYTICS



Filter Fan Electrical Control Panel

Part Number:	FANCNT
Description:	Filter Fan Electrical Control Panel
Application:	Cabinet to house the Control Gear for the extraction fan on our McBerns filters. Panel has marshalling terminals to interface the Control Status from the fan to a local PLC/RTU.
Material / Finish:	3mm Marine Grade Aluminium Finish, Powdercoated Mist Green
Dimensions:	600mm H X 500mm W X 300mm D
Weight:	<25 kg
Options:	Extended battery time
General Specifications:	3.0 mm Marine Grade Aluminium With Air Cooling Skins (Indoor/Outdoor) Internal Fan for Cooling Antigraffiti Paint (optional) Ingress Protection (IP56D) Wall Mount, Stanchion, Free Standing Cabinet

McBerns H₂S Monitoring



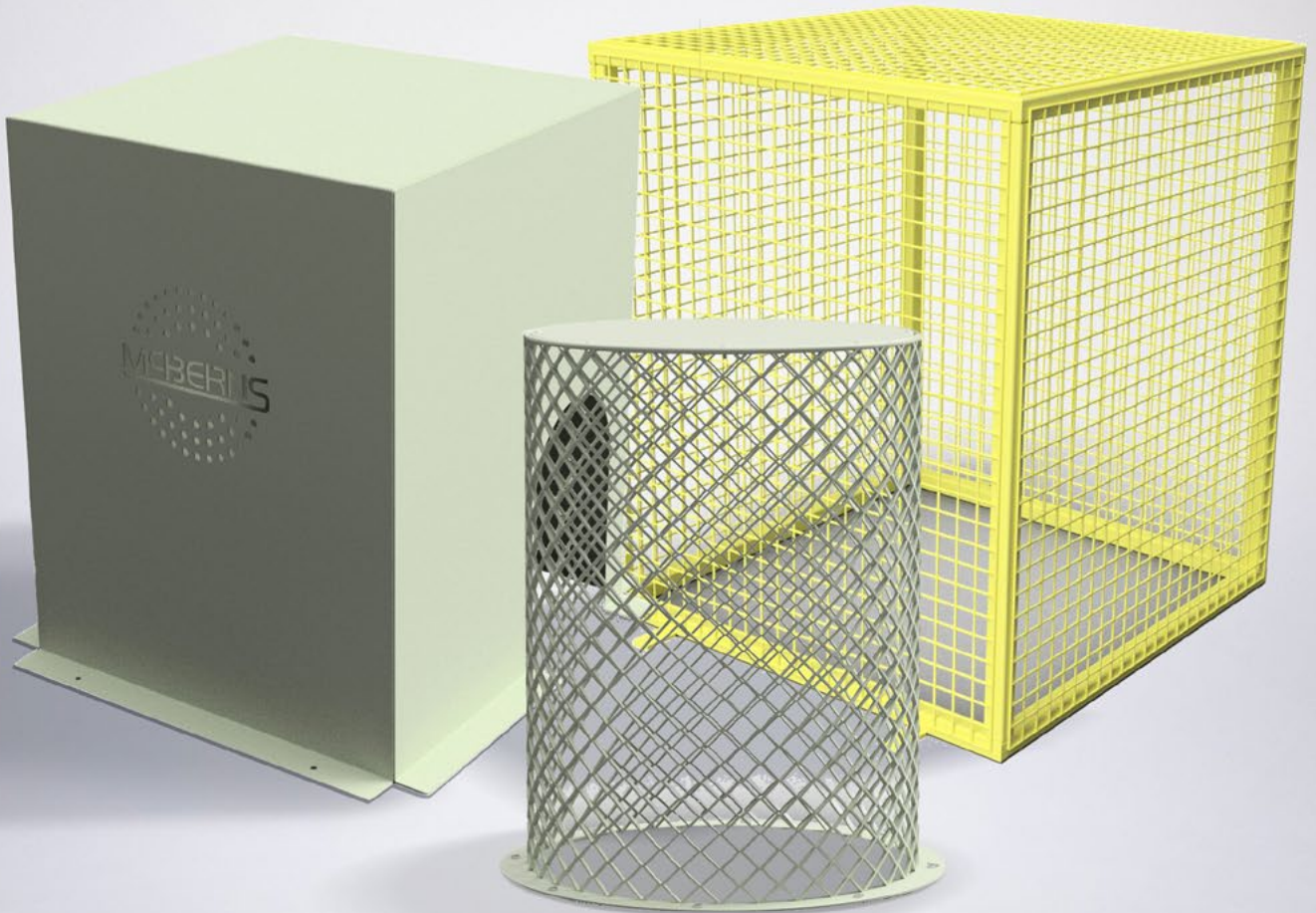
Part Number:	H ² SDIFFP
Description:	H ₂ S, Differential Pressure
Application:	Used for monitoring H ₂ S and differential pressure in our ZC series of filters
Material / Finish:	Stainless Steel, Mist Green
Dimensions:	350 W X 200 D X 500 H
Weight:	Variable
General Specifications:	Differential Pressure TX and H ₂ S Monitoring, Designed for harsh environments, Wireless download of data technology, Customized case with easy access, Easy data acquisition for connection to local RTU and/or PLC
Options:	Stainless, Polycarbonate Finishes

McBerns H₂S & Filter Fan Control



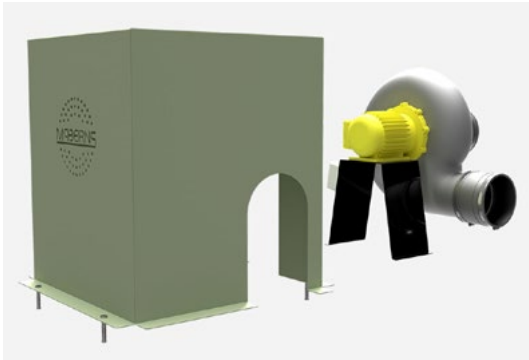
Part Number:	FANCNTH ² SDIFFP
Description:	2 X Filter Fan Control and H ₂ S / Differential Pressure Monitoring including interface to resident or 3rd party RTU
Application:	Control of 2 X McBerns Filter Fans and where there is a need for monitoring the H ₂ S Levels on the output of the filters and the Pressure gradient (in Pascals) across the filter media.
Material / Finish:	Stainless Steel 2B Finish, Mist Green
Dimensions:	1250 H X 800 W X 350 D
Weight:	Variable
General Specifications:	Cubicle 316 P/C Stainless Steel, Gear Panels (Gloss White), Static ventilation, Degree of protection IP56, Service conditions - Outdoors, 1x Phase failure relay, 2 X fan control 415VAC 3 phase each motor, Options - Filter Drain on TOD timer, Analogue/digital from Monitoring Instrumentation and Control panel to onboard RTU and/or resident RTU/PLC
Options:	Wall Mount, Stanchion, Free Standing Cabinet

ANCILLARY



ANCILLARY

Acoustic Cover for Extraction Fans



Part Number:	FSTORMCOVER
Description:	Cover for Extraction Fans
Application:	Reduce noise and control sound
Material / Finish:	Aluminium P/Coated cover for Storm 10/12
Dimensions:	Suit Specific Fan Types
Weight:	8 kg
Optional:	Acoustic properties



Traffic Flexible Bollard

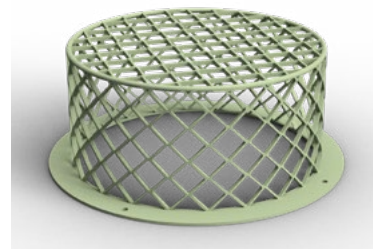
Part Number:	FLEXIBOLLARD
Description:	Flexible base to allow movement
Application:	Reduce potential damage to infrastructure / assets
Material / Finish:	Powder coated yellow steel



Valve Spindle – 150mm

Part Number:	LVASPINDLE150
Description:	150mm Aluminium Valve Spindle
Application:	Inserted into safety hatch for easy access to valve spindles
Dimensions:	160mm Diameter
Material / Finish:	Matt finish aluminium

Vandal Proof Cages



ROUND - GM375/300

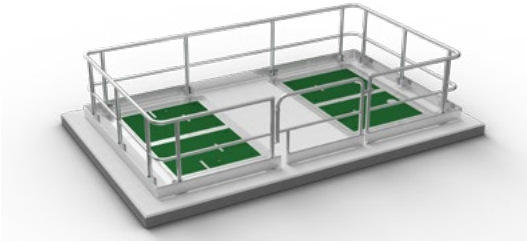
Part Number:	GM375VANCAGE
Description:	Vandal Proof Cage - GM375/300
Application:	vandalproof cage for GM375 and GM300
Material / Finish:	Pale Eucalypt Powder Coated Aluminium
Dimensions:	962mm x 700mm
Weight:	15 kg

SQUARE- GM375/300

Part Number:	GM375VANCAGESQ
Description:	Vandal Proof Cage - GM375/300
Application:	Vandal proof rectangle cage for GM375 and GM300
Material / Finish:	Powder coated steel
Dimensions:	700mm x 600mm x 600mm
Weight:	15 kg

GM150

Part Number:	GM150VANCAGE
Description:	Vandal Proof Cage - GM150
Application:	Vandal proof rectangle cage for GM150
Material / Finish:	Powder coated aluminium
Dimensions:	228 x 560mm
Weight:	15k g



Customised Handrail

Part Number:	HR CUSTOM
Description:	Taking the infrastructure into account we can design to specific requirements, all gates are self closing and lockable



Filter Hire

As a temporary solution our units are available for long or short term hire.

During shut down, maintenance, refurbishment, upgrades, manage odorous sites and your existing odour filter network with one of McBerns hire solutions.

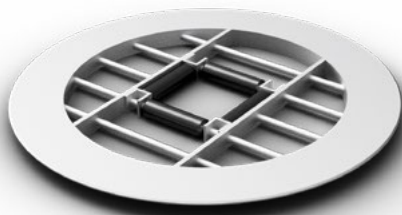
Part Number:	FILTERHIRE
Description:	ZC300 - ZC3000 filters



Odour Logger Hire & Reporting

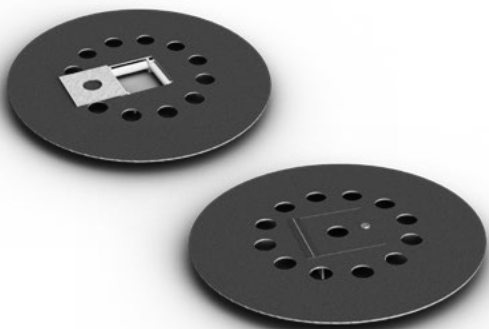
Specialising in the water industry, McBerns offers a host of asset management services, specialising in odour monitoring and maintenance as well as inspection, reporting and repair services to support this sector of industry.

Round Manhole Cover Walk Mesh



Part Number:	MHCOVERGRATEROUND
Description:	Aluminium manhole cover with rollers - Round
Application:	Temporary Protection of open manholes
Material / Finish:	Aluminium Frame
Dimensions:	600mm to 900mm Diameter
Weight:	15kg

Round Manhole Cover - Lockable



Part Number:	MHCOVROLROUN
Description:	Aluminium manhole cover with rollers Lockable
Application:	Temporary Protection of open manholes
Material / Finish:	Aluminium Frame, Non Slip Coating, Optional colours
Dimensions:	600mm to 900mm Diameter
Weight:	8 kg

ANCILLARY



Maintenance and Consultation Services

- Design & Consultancy (Electrical & Mechanical)
- Design & Manufacture of all McBerns products
- Odour Management Services
- Odour Management Site Condition Assessment
- Fabrication & Installation (Structural Certification & RPEQ)
- Project Management
- Mechanical/Electrical Services
- Installation & Commissioning
- Hire Units for various Filter applications

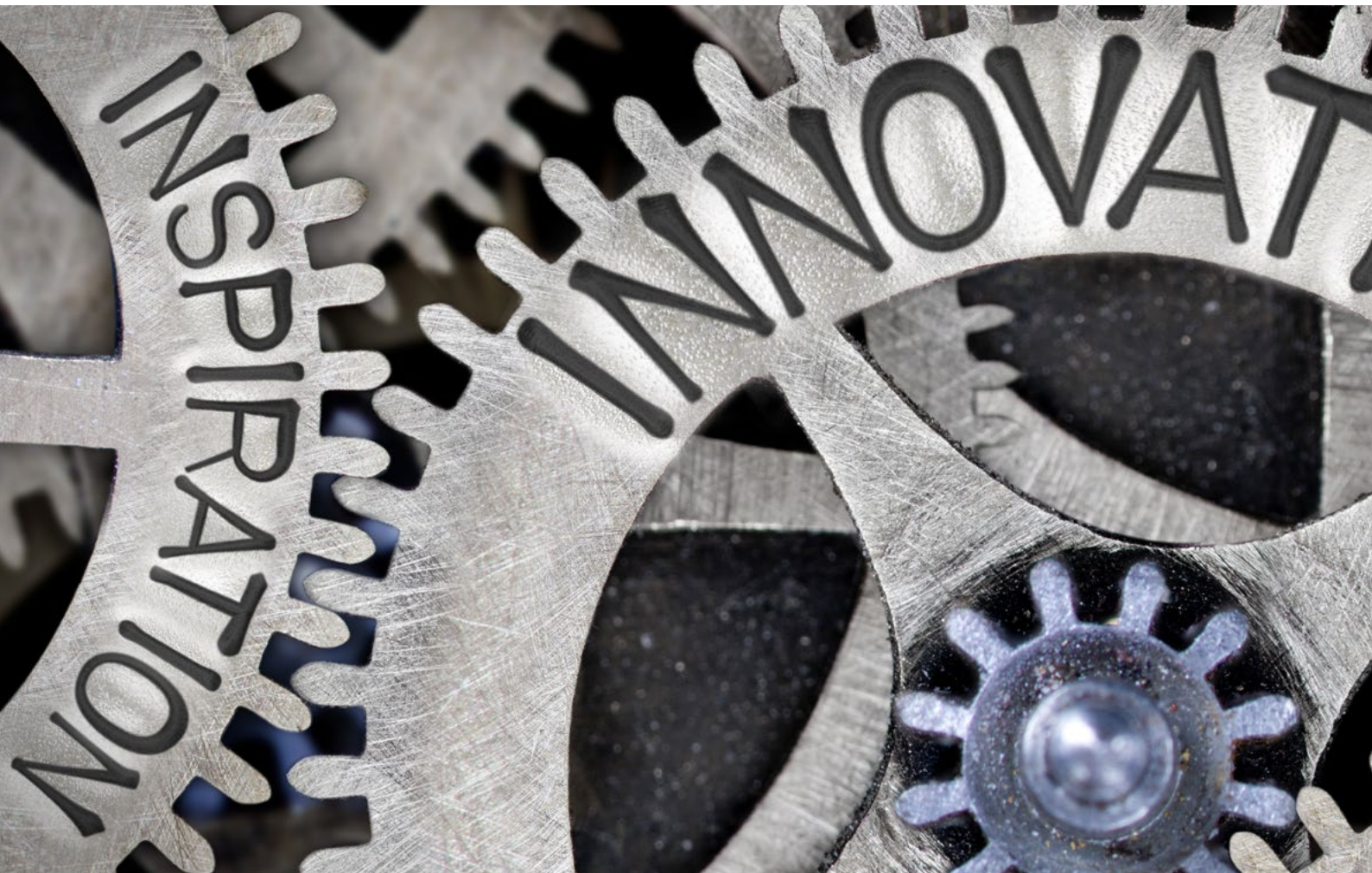
DATA ANALYTICS

- Data Analytics (Monitoring Pressure Differential across the Filter and H₂S levels on the Output of the Filter) for our Active and Passive Filters
- Monitoring/Control of the Fan, H₂S levels and Differential Pressure across the media in our Active Filters.
- Monitoring of the H₂S levels and Differential Pressure across the media in our Passive Filters.
- Monitoring H₂S ppm levels and Pressure Differential across the filter media on site via the Web to establish our Filter and Media Design requirements
- Monitoring H₂S ppm levels and Pressure Differential across the filter media on site via the Web to establish when the filter media has reach end of life
- Capability to integrate the Control & Monitoring into a local PLC or RTU onsite.

MAINTENANCE

- Asset Maintenance
- Minor Works
- Refurbishment
- H₂S Reporting
- On Site Welding
- Pressure Differential Reading

MAJOR CLIENTS WHO TRUST MCBERNS PRODUCTS







MCBERNS

INNOVATIVE SOLUTIONS

ODOUR MANAGEMENT
SAFETY ACCESS COVERS
DESIGN & FABRICATION
DATA ANALYTICS

MCBERNS PTY LTD
ABN: 56 060 984 107
Address: 11 Tectonic Crescent,
Kunda Park, Qld, 4556
Phone: +61 7 5445 1646
Email: mail@mcbarns.com

Noel Southern: 0411 745 458
Stuart Darby: 0413 436 683

WWW.MCBERNS.COM